

The MAC 900 series is a versatile 4-way solenoid piloted spool valve. This features our balanced poppet in the pilot and an air/spring return for constant shifting regardless of inlet pressure fluctuations. Versatility in piping means the valve can be piped as a 4-way, 3-way, or 2-way, normally closed or normally open or can be used for vacuum, diverter or selector applications. Our one piece bonded seal spool means longer life and easy maintenance. For more information regarding certifications (such as UL, CSA, RoHS and CE) please ask our team at Mac Valves Pacific.

Stock Part Number: 911B-PM-391JD

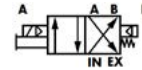
Function	Port size	Flow (Max)	Pressure Range	Individual Mounting
4/2	1/8"-1/4"	1.2 Cv	Sgls. op.: 25-150PSI, Dble. op.: 10-150PSI	Inline

OPERATIONAL BENEFITS

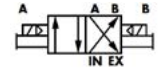
- Balanced spool, immune to variations of pressure.
- Short stroke with high flow.
- Large spool area provides maximum shifting forces.
- Powerful return force thanks to the combination of mechanical and air springs.
- Bonded spool with minimum friction, shifting in a glass-like finished bore.
- Wiping effect eliminates sticking.
- Pilot valve with balanced poppet, high flow, short and consistent response times.
- Long service life.



Single Operator



Double Operator



900 SERIES

9 X X B - XX - XX X XX
 1 2 3 4 5 6

1 - Operator

- 1 Single Solenoid
- 2 Double Solenoid

2 - Port Size

- 5 1/8 BSP
- 6 1/4 BSP

3 - Pilot Exhaust

- PM Pilot Exh. Muffled

4 - Voltage

AC Voltage		DC Voltage	
11	120/60, 110/50	50	24VDC (6W)
22	24/50-60	55	12VDC (6W)
26	400/50	57	12VDC (2.5W)
39	240/50	59	24VDC (2.5W)
		60	12VDC (8.5W)
		61	24VDC (8.5W)

5 - Manual Operator Indicator Lights

- | | |
|--------------------|-------------------------------|
| 0 No Operator | 1 Non-Locking Recessed (Std.) |
| 2 Locking Recessed | 3 Non-Locking Extended |
| 4 Locking Extended | |

6 - Enclosure

- | | |
|----------------------|----------------------|
| BA Grommet | CA Conduit 1/2" NPS |
| JA Square w/No Light | JB Rectangle |
| JC Square w/Light | JD Rectangle w/Light |

Solenoid Models - Example

Individual Models

- 916B - PM -111BA Single 1/4" BSPP
- 926B - PM -111BA* Double 1/4" BSPP - *Use 100 Solenoid Options

Stacking Models

- 917B - PM -111BA 1/8" BSPP
- 918B - PM -111BA 1/4" BSPP

Modifications

- 0158 Heavy Duty Spring

Accessories

- M-09001-01P End Plate Kit
- N-09002 Inlet and Exhaust Isolator Kit
- N-09003 Exhaust Isolator Kit
- N-09004A Inlet Isolator Kit

Remote Air Operated Models - Example

Individual Models

- 916A - RA Single 1/4" BSPP
- 926B - RA Double 1/4" BSPP

Stacking Models

- 918B - RA 1/4" BSPP
- 928B - RA 1/4" BSPP