

700 SERIES

The MAC 700 series is a versatile 4-way solenoid piloted spool valve. This series features our balanced poppet in the pilot and an air/spring return for consistent shifting regardless of inlet pressure fluctuations. Versatility in Piping means the valve can be piped as a 4-way, 3-way, or 2-way, normally closed or normally open or can be used for vacuum, diverter or selector applications. Our one piece bonded seal spool means longer life and easy maintenance. For more information regarding certifications (such as UL, CSA, RoHS and CE) please ask our team at Mac Valves Pacific.

Stock Part Number: 711C-14-PI-391JD

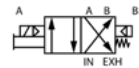
Function	Port size	Flow (Max)	Pressure Range	Individual Mounting
4/2, 5/3	1/8"-1/4"	0.8 Cv	Int.: sgle. op.: 20-150PSI, dble. op.: 10-150 PSI, Ext.: vac. to 150PSI	Inline

OPERATIONAL BENEFITS

- Balanced spool, immune to variations of pressure.
- Short stroke with high flow.
- The piston (booster) provides maximum shifting forces.
- Powerful return force thanks to the combination of mechanical and air springs.
- Bonded spool with minimum friction, shifting in a glass-like finished bore.
- Wiping effect eliminates sticking.
- Pilot valve with balanced poppet, high flow, short and consistent response times.
- Long service life.



700 SERIES



700 SERIES

7 X X C - XX - XX - XX - X - XX
 1 2 3 4 5 6 7

1 - Operator	
1 Single Operator	2 Double Operator
2 - Flow Control	
1 Without Flow Controls	2 With Flow Controls
3 - Port Size	
11 1/8 BSP	14 1/4 BSP
4 - Pilot Air	
PI Internal	PE External

5 - Voltage			
AC Voltage		DC Voltage	
11	120/60, 110/50	50	24VDC (6W)
22	24/50-60	57	12VDC (2.5W)
39	240/50	60	12VDC (8.5W)
55		59	24VDC (2.5W)
61		61	24VDC (8.5W)
6 - Manual Operator Indicator Lights			
0	No Operator	1	Non-Locking Recessed (Std.)
2	Locking Recessed	3	Non-Locking Extended
4	Locking Extended		
7 - Enclosure			
BA	Grommet	JB	Rectangle - No Light
CA	Conduit 1/2" NPS	JC	Square With Light
JA	Square - No Light	JD	Rectangle With Light

OPTIONS

7XX C- X X - P X - XX - X - XX

- For bottom ports (1/8" only) replace by 2.

Solenoid Pilot Operated Models (Sample Options)	
<i>Individual Models</i>	
711C-14-PI-111BA	1/4" BSPP threads
721C-14-PI-111BA*	1/4" BSPP threads
<i>Individual Models With Flow Controls</i>	
712C-14-PI-111BA	1/4" BSPP threads
722C-14-PI-111BA*	1/4" BSPP threads
<i>Stacking Models</i>	
713C-14-PI-111BA	1/4" BSPP Threads
723C-14-PI-111BA*	1/4" BSPP Threads
<i>Stacking Models With Flow Controls</i>	
714C-14-PI-111BA	1/4" BSPP Thread

Remote Air Pilot Operated Models (Sample Options)	
<i>Individual Models</i>	
711C-14-RA	1/4" BSPP threads
721C-14-RA	1/4" BSPP threads
<i>Individual Models With Flow Controls</i>	
712C-14-RA	1/4" BSPP threads
722C-14-RA	1/4" BSPP threads
<i>Stacking Models</i>	
713C-14-RA	1/4" BSPP threads
723C-14-RA	1/4" BSPP threads
<i>Stacking Models With Flow Controls</i>	
714C-14-RA	1/4" BSPP threads
724C-14-RA	1/4" BSPP threads
<i>Accessories</i>	
M-07001-01-01P	End Plate Kit – Internal Pilot
M-07001-02-01P	End Plate Kit – External Pilot
N-07005	Isolator Kit – Inlet/Exhaust
N-07006	Isolator Kit – Inlet Only
N-07007	Isolator Kit – Exhaust Only