

# 46 SERIES

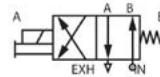
The MAC 46 series is a direct solenoid operated 4-way poppet valve. High flow in a small package, Oval armature. These feature a short stroke solenoid, a balanced poppet and conical seats. These features translate into high shifting forces, fast consistent response times, and long life. For more information regarding certifications (such as UL, CSA, RoHS and CE) please ask our team at Mac Valves Pacific.

**Stock Part Number:** 46A-L00-JDAP-0FG MOD:532F

Function	Port size	Flow (Max)	Pressure Range	Individual Mounting
4/2	1/8"	0.30 Cv	Vac. to 120PSI	Inline

### OPERATIONAL BENEFITS

- Balanced poppet, immune to variations of pressure.
- Short stroke with high flow.
- The patented solenoid develops high shifting forces.
- Powerful return spring.
- Manual operator standard on all valves.
- Burn-out proof solenoid on AC service.



46 SERIES

## 46 SERIES

46A -  $\overset{\text{1}}{\underset{\text{T}}{\text{X}}} \overset{\text{2}}{\underset{\text{T}}{\text{X}}} \overset{\text{3}}{\underset{\text{T}}{\text{X}}} - \overset{\text{4}}{\underset{\text{T}}{\text{J}}} \overset{\text{5}}{\underset{\text{T}}{\text{XX}}} \overset{\text{6}}{\underset{\text{T}}{\text{X}}} - \overset{\text{7}}{\underset{\text{T}}{\text{X}}} \overset{\text{8}}{\underset{\text{T}}{\text{XX}}} (\text{G})$

### 1 - Body Type

- Inline*
- A 4 Port Body with Side Ports
  - C 4 Port Body with Bottom Ports (No Side Ports)
  - D Bottom O-Ring Mount-All Ports (No Side Ports)
  - F Bottom O-Ring Mount-Cylinder Ports Only (Side Inlet & Exhaust)
  - G 4 Port Body - Double
  - H 4 Port Body - Double Bottom O'Ring Mount
- Stacking Body*
- S Stacking Body

### Base Mount

- L Single Solenoid Base Mount Body
- N Double Solenoid Base Mount Body

### 2 - Port Size & Thread Type

- O Base Mount Body
- C 1/8" BSPPL
- G Use with O-Ring Mount Body Option "D"

### 3 - Configuration

- Base Mount
- O Base Mount Body
- Inline or Stacking Body*
- 1 No Flow Controls
  - 2 With Flow Controls

## 46 SERIES SOLENOID

$\overset{\text{4}}{\underset{\text{T}}{\text{J}}} \overset{\text{5}}{\underset{\text{T}}{\text{XX}}} \overset{\text{6}}{\underset{\text{T}}{\text{X}}} - \overset{\text{7}}{\underset{\text{T}}{\text{X}}} \overset{\text{8}}{\underset{\text{T}}{\text{XX}}} (\text{G})$

### 4 - Operator

- J SOLENOID

### 5 - Voltage

- |                              |                              |
|------------------------------|------------------------------|
| AC 24VAC (54W) - MAX. Cv=0.3 | DA 24VDC (54W) - MAX. Cv=0.3 |
| DB 12VDC (54W) - MAX. Cv=0.3 | DC 24VDC (24W)               |
| DD 12VDC (24W)               |                              |

### 6 - Lead Wire Length

- O No Lead Wires
- A 18" Leads

### 7 - Manual Operator

- |                    |                        |
|--------------------|------------------------|
| 0 No Operator      | 1 Non-Locking Recessed |
| 2 Locking Recessed | 3 Non-Locking Extended |
| 4 Locking Extended |                        |

### 8 - Electrical Cover Connection

- BA Flying Leads
- GA MAC Jac Solenoid Plug-In
- GB MAC Jac Solenoid Plug-In With Diode
- GC MAC Jac Solenoid Plug-In With MOV
- GD MAC Jac Solenoid Plug-In With LED
- GE MAC Jac Solenoid Plug-In With Diode & LED
- GF MAC JJac Solenoid Plug-In With MOV & LED

### 94 mm Pin Spacing

- |  |                                 |
|--|---------------------------------|
| KA Mini Plug-In                                    | KB Mini Plug-In With Diode      |
| KC Mini Plug-In w/MOV                              | KD Mini Plug-In With Light      |
| KE Mini Plug-In w/Diode & Light                    | KF Mini Plug-In w/MOV & Light   |
| KG Mini Plug-In w/Rectifier                        | KH Mini Plug-In w/Rect. & Light |
| KJ Mini Plug-In - Male Only                        | KK Mini Plug-In w/Diode M. Only |
| KL Mini Plug-In w/MOV - Male Only                  | KM Mini Plug-In w/Light M. Only |
| JA Square Connector                                | JC Square Connector w/Light     |
| JJ Square Connector - Male Only                    | JB Rectangular Connector        |
| JD Rectangular Connector With Light                | JP Rectnglr. Connector w/MOV    |
| JM Rectangular Connector - M. Only                 |                                 |
| KN Mini Plug-In w/Diode & Light - Male Only        |                                 |
| KP Mini Plug-In w/MOV & Light - Male Only          |                                 |
| KR Mini Plug-In With Rectifier - Male Only         |                                 |
| KS Mini Plug-In With Rectifier & Light - Male Only |                                 |

### 9 - Ground

- G Ground Pin/Wire

### Accessories

- |             |                               |
|-------------|-------------------------------|
| M-46001-01P | End Plate Kit (Stacking)      |
| M-46002     | Blank Station Cover Plate     |
| N-46001     | Body Top Cover Plate (Inline) |
| N-46002     | Body Top Cover Plate w/Flow   |

### Controls (Inline)

- 28493 Exhaust Isolater (Stacking)
- 28494 Inlet Isolater (Stacking)

## 46 SERIES REGULATOR

PR46A -  $\begin{matrix} X & X & X & X & 9 \\ \hline T & T & T & T & T \\ \hline 1 & 2 & 3 & 4 & \end{matrix}$  Assembled to Valve

### 1 - Style

- 0 Regulator Only
- B Non Plug-In Block
- A Plug-In Block (Single Solenoid Only)

### 2 - Adjustment

- 0 Regulator Block Only
- B Adjusting Knob
- A Slotted Stem
- C Slotted Stem with Locknut

### 3 - Gauge

- 0 Regulator Block Only
- A Gauge Port Plugged

### 4 - Pressure Range

- 0 Regulator Block Only
- B 0-80 psi
- A 0-120 psi
- C 0-30 psi

## 46 SERIES - PLUG-IN MANIFOLD

46A -  $\begin{matrix} X & X & X & - & X & X & - & J & XX & P & - & X & XX & - & (G) \\ \hline T & T & T & & T & T & & T & T & T & & T & T & & T \\ \hline 1 & 2 & 3 & & 4 & 5 & & 6 & 7 & 8 & & 9 & 10 & & 11 \end{matrix}$  Valves and cover plates assembled to bar

### 1 - Body Type

- 0 Base only
- L Single solenoid base mount body
- M Single solenoid base mount body w/ gauge port
- N Double solenoid base mount body
- P Double solenoid base mount body w/ gauge port

### 2 - Manifold Style

- 0 Valve only
- S Plug-in (12" base leads)

### 3 - Port Size & Thread Type

- 0 Valve only
- B 1/8" BSPPL

### 4 - Manifold Wiring

- 0 Valve only
- B Wired for double solenoid
- A Wired for single solenoid

### 5 - Manifold Configuration

- 0 Valve only
- D Side cylinder ports w/flow controls
- E Bottom cylinder ports w/reg. (slotted stem)
- F Bottom cylinder ports w/reg. (slotted stem) & flow controls
- L Bottom cylinder ports
- M Bottom cylinder ports w/flow controls
- C Side cylinder ports

### 6 - Solenoid

- J Solenoid

### 7 - Voltage

- AC 24 VAC (54w) - Max Cv=0.3
- DA 24 VDC (54w) - Max Cv = 0.3
- DB 12 VDC (54w) - Max Cv = 0.3
- DC 24 VDC (24w)
- DD 12 VDC (24w)

### 8 - Lead Wire

- P Plug-in

### 9 - Manual Operator

- 0 No operator
- 2 Recessed locking operator
- 4 Extended locking operator
- 1 Recessed non-locking operator
- 3 Extended non-locking operator

### 10 - Electrical Connection

- FA Base Plug-In
- FC Base Plug-In w/MOV
- FE Base Plug-In w/Diode and LED
- FG Base Plug-In w/Rectifier
- FB Base Plug-In with Diode
- FD Base Plug-In w/LED
- FF Base Plug-In w/MOV & LED
- FH Base Plug-In w/Rectifier & LED

### 11 - Ground

- G Ground wire pin

### Parts/Flow Control (Sandwich)

- M-46003-01P End plate kit
- M-46002 Valve blanking plate
- 63299 Electrical Plug-In Protector
- M-46007 Valve and Electrical Blanking Plate
- 28502 Exhaust isolator
- 28501 Inlet isolator
- FC46A-AA Sandwich flow control (Plug-in)
- FC46A-BA Sandwich flow control (Non Plug-in)



## 46 SERIES - CIRCUIT BAR NON PLUG-IN

EBM46A -  $\overset{\text{T}}{\underset{1}{\text{XX}}} \overset{\text{T}}{\underset{2}{\text{X}}} \overset{\text{T}}{\underset{3}{\text{X}}} \overset{\text{T}}{\underset{4}{\text{X}}} - \overset{\text{T}}{\underset{5}{\text{XX}}} - 9$   
Valves and cover plates assembled to bar

### 1 - Spacing

- 00 16.5mm Spacing
- 01 26.0mm Spacing

### 2 - Configuration

- A Side Cylinder Ports
- B Bottom Cylinder Ports
- C Side Cylinder Ports with Flow Controls
- D Bottom Cylinder Ports with Flow Controls
- E Side Cylinder Ports with Regulator
- F Bottom Cylinder Ports with Regulator
- G Side Cylinder Ports, Flow Controls, & Regulator
- H Bottom Cylinder Ports, Flow Controls & Regulator

### 3 - Style

- A Standard

### 4 - Port Size & Thread Type

- B 1/8" BSPPL

### 5 - Stations

- Number of Stations (01, 02, 03, etc.)
- M - 46002 Blank Station Cover Plate

Note: Regulator must be ordered separately.

## 46 SERIES - ECD PLUG-IN CIRCUIT BAR

ECD46A -  $\overset{\text{T}}{\underset{1}{\text{XX}}} \overset{\text{T}}{\underset{2}{\text{X}}} \overset{\text{T}}{\underset{3}{\text{X}}} \overset{\text{T}}{\underset{4}{\text{X}}} - \overset{\text{T}}{\underset{5}{\text{XX}}} - \overset{\text{T}}{\underset{6}{\text{XX}}} - 9$   
Valves and cover plates assembled to bar

### 1 - Spacing

- 00 16.5mm Spacing

### 2 - Configuration

- A Side Cylinder Ports
- B Bottom Cylinder Ports
- C Bottom Cylinder Ports with Regulator
- D Side Cylinder Ports with Flow Controls
- E Bottom Cylinder Ports with Flow Controls
- F Bottom Cylinder Ports with Regulator & Flow Controls

### 3 - Style

- A Standard

### 4 - Port Size & Thread Type

- B 1/8" BSPPL

### 5 - Lights

- A0 Standard (No Light)

### 6 - Stations

- Number of Stations (01, 02, 03, etc.)

Note: Regulator must be ordered separately

### Accessories

- |         |                                     |
|---------|-------------------------------------|
| 63299   | Wire Connector Protector            |
| M-46002 | Valve Blanking Plate                |
| M-46007 | Valve and Electrical Blanking Plate |

