

The MAC 45 series is a direct solenoid operated 4-way poppet valve. These feature a short stroke solenoid, a balanced poppet and conical seats. These features translate into high shifting forces, fast consistent response times, and long life.

For more information regarding certifications (such as UL, CSA, RoHS and CE) please ask our team at Mac Valves Pacific.

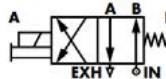
**Stock Part Number:** 45A-AC1-DDAJ-1KD

Function	Port size	Flow (Max)	Pressure Range	Individual Mounting
4/2	1/8"	0.15 Cv	Vac. to 120PSI	Inline

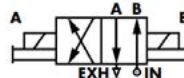
### OPERATIONAL BENEFITS

- Balanced poppet, immune to variations of pressure.
- Short stroke with high flow.
- The patented solenoid develops high shifting forces.
- Powerful return spring.
- Manual operator standard on all valves.
- Burn-out proof solenoid on AC service.

Single Operator



Double Operator  
(Minimum DC wattage 54W)



45 SERIES

### 45 SERIES VALVE & BASE OPTIONS

45A - X X X - D XX X - X XX  
1 2 3 4 5 6 7 8

#### 1 - Body Type

Inline

- 0 Manifold base only
- A 4 port body
- B 5 port body(N/A with flow controls)
- D 4 port body o-ring mount — all bottom ports
- E 5 port body o-ring mount— 3 bottom ports
- F 4 port body o-ring mount — bottom cylinders only
- G 4 port body (double)
- H 4 port body o-ring mount — all bottom ports (double)
- J 4 port body o-ring mount — bottom cylinders only (double)

Stacking Body

- S Stacking body
- T Stacking body (double)

Base Mount Body

- 0 Base only — no valve
- L Base mount body
- M Base mount body with pressure sensing port
- N Base mount body (double)
- P Base mount body with pressure sensing port(double)

#### 2 - Port Size And Thread Type

- 0 Base mount body only or regulator only
- C 1/8" BSPPL Side Ports
- H O-ring mount ports (inline only)

#### 3 - Flows Controls/Regulators - Base/Manifold Types

Inline or Stacking Body

- 1 No flow control
- 2 With flow control

Manifold Base — Flow Controls & Regulators

- 0 Valve only — no base or manifold
- A Individual base
- B Individual base with flow controls
- C Manifold base
- D Manifold with flow controls
- E Manifold and regulator with slotted stem
- F Manifold With flow control and regulator with slotted stem
- G Manifold with regulator with locking slotted stem
- H Manifold with flow control and regulator with locking slotted stem

- J Manifold with regulator with locking knob
- K Manifold with regulator with locking knob with flow controls  
Regulators Only
- L Regulator only with slotted stem
- M Regulator only with locking slotted stem
- N Regulator only with slotted stem with flow controls
- P Regulator only with locking slotted stem w/flow controls
- R Regulator only with locking knob
- S Regulator only with locking knob with flow controls

#### 4 - Operator

- D Solenoid
- RAIX Remote air

#### 5 - Voltage

AA 120/60, 110/50	AC 24/60, 24/50
AF 240/50	DA 24 VDC (54w)
DB 12 VDC (54W)	DE 12 VDC (12.7W) (MOD CLSF only)
FE 12 VDC (24w)	DF 24 VDC (12.7W) (MOD CLSF only)
FF 24 VDC (24w)	

#### 6 - Lead Wire Length

- A 18" coil leads
- J External plug-in lead

#### 7 - Manual Operator

- 0 No operator
- 1 Non-locking manual op.
- 2 Locking manual op.
- 3 Non-locking extended op.
- 4 Locking extended operator

#### 8 - Electrical Connector

- BA Grommet
- JB Rectangular plug-in - No Light
- JD Rectangular plug-on w/light
- JM Rectangular male only
- KA Mini plug-in - No Light
- KD Mini plug-in with light
- KJ Mini plug-in male only

\*Accessories continued on next page

### Accessories

M-45001-01P	End plate kit (stacking)	N-45005	Inlet and exhaust isolator (stacking)
M-45004	Spacer plate conduit kit	N-45006	Inlet isolator (stacking)
M-45005-01P	End plate kit — common conduit (stacking)	N-45007	Exhaust isolator (stacking)
M-45008-01P	End plate kit (manifold)	N-45008	Inlet & exhaust isolator (manifold)
M-45010	Blank station cover plate (manifold)	N-45009	Inlet isolator (manifold)
M-45010-01	Blank station cover plate w/pressure outlet	N-45010	Exhaust isolator (manifold)
N-45001	Top plate (individual)	N-45015	Manifold base end cover plate plain
N-45002	Flow control plate (individual)	N-45016	Manifold base end cover plate w/flow controls
N-45003	Top plate (stacking)	N-45018	Flow control needle assembly (Individual Base)
N-45004	Flow control plate (stacking)		

## 45 SERIES - MACONNECT ADAPTER ASSEMBLY

M - 45026 -  $\begin{matrix} \text{XX} & \text{X} & \text{X} \\ \text{---} & \text{---} & \text{---} \\ \text{1} & \text{2} & \text{3} \end{matrix}$

### 1 - Type of Connector

09	9 Pin Sub D	20	20 Pin
10	10 Pin	24	24 Pin Amp CPC
15	15 Pin Sub D	25	25 Pin Sub D
16	16 Pin	26	26 Pin

### 2 - Location of Adapter

- 1 Left End
- 2 Right End

### 3 - Thread Type

P BSPPL Threads

### Modifications

MOD 1705 Negative Commons

## 45 SERIES - SANDWICH REGULATOR

PR45A -  $\begin{matrix} \text{X} & \text{X} & \text{X} & \text{X} \\ \text{---} & \text{---} & \text{---} & \text{---} \\ \text{1} & \text{2} & \text{3} & \text{4} \end{matrix}$  -  $\frac{9}{\text{---}}$   
Valves & cover plates assembled to Bar

### 1 - Style

- 0 Regulator Only
- A Plug-In Solenoid Block (Single Solenoid)
- B Non Plug-In Block (Double Solenoid)

### 2 - Adjustment

- |                        |                  |
|------------------------|------------------|
| 0 Regulator Block Only | A Adjusting Knob |
| B Slotted Stem         | C Locking Stem   |

### 3 - Gauge

- 0 No Gauge Port

### 4 - Pressure Range

- 0 Regulator Block Only
- A 0-120 psi

### Accessories

M-45010-03	Valve Blanking Plate
M-45010-04	Valve Blanking Plate w/By-pass to "B" Port
16520	Wire Protector Connector for Plug-In Bar (Blank Station)

## 45 SERIES - CIRCUIT BAR NON PLUG-IN

EBM45A -  $\begin{matrix} \text{XX} & \text{X} & \text{X} & \text{XX} \\ \text{---} & \text{---} & \text{---} & \text{---} \\ \text{1} & \text{2} & \text{3} & \text{4} \end{matrix}$  -  $\frac{9}{\text{---}}$   
Valves & cover plates assembled to Bar

### 1 - Spacing

- |                 |                 |
|-----------------|-----------------|
| 00 21mm Spacing | 01 26mm Spacing |
|-----------------|-----------------|

### 2 - Configuration

- 1 Side Cylinder Ports (21mm)
- 3 Regulator with Side Cylinder Ports (21mm)
- 5 Flow Controls with Side Cylinder Ports (26mm)
- 7 Regulator and Flow Controls with Side Cylinder Ports (21mm)

### 3 - Port Size & Thread Type

- C 1/8" BSPPL

### 4 - Stations

Number of Stations (01, 02, 03, etc.)

### Accessories

- M-45010 Valve Blanking Plate
- M-35005 Regulator Blanking Plate

### Regulators (For Option 3)

- 35A-00L Slotted Stem
- 35A-00M Adjusting Knob
- 35A-00U Locking Stem

### Regulators With Flow Controls (For option 7)

- 45A-001 Slotted Stem
- 45A-002 Adjusting Knob
- 45A-003 Locking Stem

