

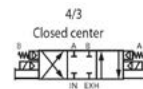
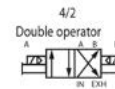
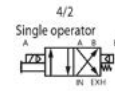
The MAC 82 series is a versatile 4-way solenoid piloted spool valve. This features our balanced poppet in the pilot and an air/spring return for consistent shifting regardless of inlet pressure fluctuations. Our balanced spool means the valve can be piped as a 4-way, 3-way or 2-way, normally closed or normally open or can be used vacuum, diverter or selector applications. Our one piece bonded seal spool means longer life and easy maintenance. For more information regarding certifications (such as UL, CSA, RoHS and CE) please ask our team at Mac Valves Pacific.

Stock Part Number: 82A-AC-000-TM-DDAP-1DA

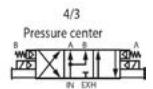
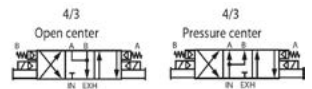
Function	Port size	Flow (Max)	Individual Mounting
4/2, 4/3	1/8"-1/4"-3/8"	1.35 Cv	Sub Base 'Plug-In'/'Non Plug-In'

OPERATIONAL BENEFITS

- Balanced spool, immune to variations of pressure.
- Short stroke with high flow.
- The piston (booster) provides maximum shifting forces.
- Powerful return force thanks to the combination of mechanical and air springs.
- Bonded spool with minimum friction, shifting in a glass-like finished bore.
- Wiping effect eliminates sticking.
- Pilot valve with balanced poppet, high flow, short and consistent response times.
- Long service life.



82 SERIES



82 SERIES VALVE & BASE OPTIONS

82A - X X - X X X - XX - D XX X - X XX
 T T T T T T T T T T
 1 2 3 4 5 6 7 8 9 10

1 - Spool Type - Valve Function

- O Base or Manifold Only
- A Single Solenoid - Single Pressure
- B Double Solenoid - Single Pressure
- C Single Solenoid - Dual Pressure
- D Double Solenoid - Dual Pressure
- E Double Solenoid - 3-Position Closed Center
- F Double Solenoid - 3-Position Open Center
- G Double Solenoid - 3-Position Pressure Center
- H Double Solenoid - 3-Position - Dual Pressure - Pressure Center
- J Single Solenoid - Single Pressure With Solenoid On "B" End
- K Single Solenoid - Dual Pressure With Solenoid On "B" End
- L Double Solenoid - 3-Position Dual Pressure - Open Center
- M Double Solenoid - 3-Position Dual Pressure - Closed Center

2 - Body Type/Lights In Body

- A Plug-in Body
- B Non Plug-in Body
- C Internal Plug-in With Light In Body
 - Single Light 120V Single Light 240V
 - Single Light 24V Double Light 120V
 - Double Light 240V Double Light 24V

3 - Port Size And Thread Type

- O Valve Only
- E 1/4" BSPPL Ports
- F 3/8" BSPPL Ports
- L 1/4" Dual Pressure BSPPL Ports (Individual Base Only)
- M 3/8" Dual Pressure BSPPL Ports (Individual Base Only)

4 - Base/Manifold Configurations

- O Valve Only
- A Individual Base - Standard Porting
- B 1/4" Bottom Ports
- C 1/4" Both Bottom & Side Ports
- D Individual Side Inlet & Exhaust - Bottom Cylinder Ports
- K Manifold Base - Standard Ports
- L Manifold With Bottom Cylinder Ports
- M Manifold With Additional Bottom Inlet
- R Manifold Bottom Inlet & Bottom & End Cylinder Ports

5 - Internal/External Pilot

- O Internal Pilot Valve Only - No Base
- A No Indicator Light
- B Single Indicator Light in Base or Manifold
 - 110V 240V 24V
- C Double Indicator Light in Base or Manifold
 - 110V 240V 24V
- D External Pilot - No Light
 - Individual Base Manifold
- E External Pilot - Single Light in Base or Manifold
 - Individual Base 110V Individual Base 240V
 - Individual Base 24V Manifold 110V
 - Manifold 240V Manifold 24V
- F External Pilot - Double Light in Base or Manifold
 - Individual Base 110V Individual Base 240V
 - Individual Base 24V Manifold 110V
 - Manifold 240V Manifold 24V

6 - Pilot Body

- TM Pilot Valve with muffled exhaust
- TP Pilot Valve with piped exhaust
- TU Pilot Valve; pilot exhaust out main exhaust (Single Pressure Only)

*Continued Next Page

7 - Voltage

AA 120/60, 110/50	AC 24/60, 24/50
AF 240/50	DA 24 VDC (54W)
DB 12 VDC (54W)	DC 12 VDC (7.5W)
DD 24 VDC (7.3W)	DE 12 VDC (12.7W) (CLSF)
DF 24 VDC (12.7W) (CLSF)	FE 12 VDC (24W)
FF 24 VDC (24W)	

8 - Wire Length

Plug-in Valve/Base		Non Plug-in Valve/Base	
P Plug-in 8" - Standard		A 18"	E 72"
1 18"	4 48"	B 24"	F 96"
2 24"	5 72"	C 36"	J 6"*
3 36"	6 96"	D 48"	

* Lead wire length for external plug-in connectors must be "J"

9 - Manual Operator

- 0 No Operator
- 1 Non-Locking Manual Operator
- 2 Locking Manual Operator
- 3 Non-Locking Extended Manual Operator
- 4 Locking Extended Manual Operator

10 - Electrical Connector

DA Plug-in	BA Grommet
CA Conduit 1/2"	JB Rectangular Plug-in
JD Rectangular Plug-in with Light	JM Rectangular Male Only
KA Mini Plug-in	KB Mini Plug-in with Diode
KC Mini Plug-in with M.O.V.	KD Mini Plug-in with Light
KE Mini Plug-in with Light & Diode	KF Mini Plug-in w/light & M.O.V.
KG Mini Plug-in with LED Light & Diode	

82 Series Pilot Valves - Bodies and Assemblies

TM	Pilot Body Assembly Only
TP	Pilot Body Assembly Only
TU	Pilot Body Assembly Only
TM-DXXY-XXX*	Complete Pilot Valve
TP-DXXY-XXX*	Complete Pilot Valve
TU-DXXY-XXX*	Complete Pilot Valve
TM-RAIX	Complete Remote Air Pilot Valve
TP-RAIX	Complete Remote Air Pilot Valve
TU-RAIX	Complete Remote Air Pilot Valve
TO-RAIX	Remote Air Operator
DXXY-XXX*	Solenoid and Cover Assembly

Note: Low wattage available as complete valves only

82 Series Flow Control Module

FC82A-AA	Plug-in Flow Control Assembly
FC82A-BA	Non Plug-in Flow Control Assembly

82 Series Accessories

N-82005-01	Manifold Fastening Kit
32835 3/8"	Isolation Plugs
M-82003	Blank Station Cover Plate (Manifold)
M-82003-00-1	Blank Station Cover Plate when used with regulator

82 SERIES REMOTE AIR

82A-XX-XXX-RA
TT TTT
1 2 3 4 5

1 - Spool - Valve Function

- 0 Base Only
- A Single Operator — Single Pressure
- B Double Operator — Single Pressure
- E 3-Position Closed Centre
- F 3-Position Open Centre
- G 3-Position - Single Pressure - Pressure Centre
- H 3-Position Dual Pressure, Pressure Centre

2 - Remote Air

- B Remote Air Body

3 - Port Size And Thread Type

- 0 Valve Only — No Base
- D 1/8" BSPPL
- E 1/4" BSPPL
- F 3/8" BSPPL

4 - Base Configurations

- 0 Valve Only — No Base
- A Base with Standard Porting
- B Base with Bottom Ports Only (1/8" or 1/4")
- C Base with Side and Bottom Ports (1/8" or 1/4")
- D Base with Side Inlet and Exhaust and Bottom Cylinder Ports

5 - Single/Double Remote Air Base

- 0 Valve Only — No Base
- A Single Remote Air — Internal Pilot
- D Single Remote Air — External Pilot or Double Remote Air



82 SERIES REGULATOR

PR82A - $\begin{matrix} X & X & X & X & X \\ T & T & T & T & T \\ 1 & 2 & 3 & 4 & 5 \end{matrix}$

1 - Adjustment Type

Manual Adjust With Slotted Stem

- A Plug-in Solenoid
- B Remote Air or Non Plug-in
- C Regulator Only

Air Pilot Adjust (0-120 PSI Only)

- D Plug-in Solenoid
 - Single
 - Double
- E Remote Air or Non Plug-in Body
 - Single
 - Double
- F Regulator Only

Manual Adjust With Locking Knob

- G Plug-in Solenoid
 - Single
 - Double
- H Remote Air or Non Plug-in Body
 - Single
 - Double
- J Regulator Only

Manual Adjust With Locking Slotted Stem

- K Plug-in Solenoid
 - Single
 - Double
- L Remote Air or Non Plug-in
 - Single
 - Double
- M Regulator Only

2 - Configuration

- O Regulator Only
- A Regulator on "A" end (Standard)
- B Regulator on "B" end with by-pass on "A" end
- C Regulator on "A" end with by-pass on "B" end
- D Regulators on both ends
- S Selector to inlet of next valve (Dual Reg.)
- T Selector to inlet of next valve (Sgle. reg. w/by-pass on "A")

3 - Gauges

- A No gauge port
- B Gauge with face perpendicular to manual operator**
 - Single & Double
- C Gauge with face parallel to manual operator**
 - Single & Double
- D Gauge port with pipe plug
 - Single & Double

4 - Pressure Range

- A 0-120 PSI
- B 0-80 PSI
- C 0-30 PSI
- D 0-120 PSI on "A" end
0-80 PSI on "B" end
- E 0-120 PSI on "B" end
0-80 PSI on "A" end
- F 0-120 PSI on "A" end
0-30 PSI on "B" end
- G 0-120 PSI on "B" end
0-30 PSI on "A" end
- H 0-80 PSI on "A" end
0-30 PSI on "B" end
- J 0-80 PSI on "B" end
0-30 PSI on "A" end

5 - Assembly

- 7 Regulator block supplied with extra long screws to be used in conjunction with flow control blocks
- 8 Same as 7 except valve assembles to block
- 9 Regulator block assembled to valve

MAC 82 Series Regulator Accessories

- *N-82013 Extra long screws for sandwich regulator mounted with flow control block.

Note: If option #7 or #8 are ordered in position #5, this kit does not need to be ordered separately

Gauges

Gauge Assemblies

- N-82016-01 (0-120 PSI — "B" option)
- N-82016-02 (0-120 PSI — "C" option)
- N-82016-03 (0-80 PSI — "B" option)
- N-82016-04 (0-80 PSI — "C" option)
- N-82016-05 (0-30 PSI — "B" option)
- N-82016-06 (0-30 PSI — "C" option)

Gauges Only

- 24143-030P
- 24143-100P
- 24143-160P

Gauge Extensions

- 32602 (90°)
- 32603 (Straight)

Note: Gauges called out in regulator must be ordered as separate line item @ N/C