

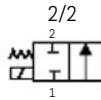
BV21 - 21mm BULLET VALVE

The BV21 represents yet another evolution in air valve technology from MAC. The Bullet Valve® utilizes “lifting” solenoid technology. The MAC “lifting” configuration is unique, however, in that the valve maintains a balanced design – a signature feature of a MAC valve – shifting forces are consistently high and response times are repeatable regardless of inlet pressure fluctuations. 2-way and 3-way configurations of the BV21 cartridge are available.

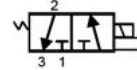
Function	Flow [max]	Manifold mounting	Series
2/2, 3/2 N.C., Universal	Up to 0.6 Cv	Cartridge	BV221, BV321

OPERATIONAL BENEFITS

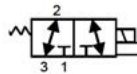
- 2-Way (BV221) & 3-Way (BV321) configurations available
- Very few parts
- Long life lifting solenoid
- One piece poppet / armature
- Balanced Design
- Solenoid isolated from contaminated air
- Unique mounting



3/2 Normally Closed



3/2 Universal



BV221

2-Way, Cartridge Style - 1.0Cv

2-Way 21mm BULLET VALVE

BV221A - C¹ - 00 - X² X³ X⁴ - X⁵ X⁶

1 - Spool Type

- A 2-Way (Standard) B 2-Way (Axial Flow)

2 - Base Type

- B Round

3 - Voltage

- EH 24 VDC (2.5w) EG 24 VDC (4.0w)
- EK 12 VDC (2.5w) EJ 12 VDC (4.0w)

4 - Lead Length Options

- O No Leads A 18" B 24" C 36"
- D 48" E 72" F 96" H 144"

5 - Solenoid Can (round)

- C For Top Cover Option and Can w/ Outer Threads

6 - Solenoid Cover

JST	Pico	Flying Leads	
TA		BA	No ground wire
TC	PC	BC	Blocking & suppr. diode & LED (no ground)
TE	PE	BE	Blocking & suppr. diode (no ground)
TG	PG	BG	LED (no ground)
TJ	PJ	BJ	MOV (no ground)
TL	PL	BL	LED & MOV (no ground)
	PN		Transfer Board

Note: Pico covers PC-PL have a 3rd pin which is an isolation pin

For CIRCUIT BAR ordering information please consult MVP

SMALL 3-WAY

LARGE 3-WAY

SMALL 4-WAY

LARGE 4-WAY

ISO VALVES

PPC VALVES

PULSE VALVES

BULLET VALVES

3-Way 21mm BULLET VALVE

BV321A - C X1 - 00 - X XX X - X XX
 T T T T T T
 1 2 3 4 5 6

1 - Spool Type

C 3-Way Normally Closed D 3-Way Universal

2 - Solenoid

B Round

3 - Voltage

HA 24VDC (1.0W)	HB 24VDC (1.8W)	HC 24VDC (2.5W)
HD 24VDC (3.0W)	HE 24VDC (4.0W)	HF 12VDC (1.0W)
HG 12VDC (1.8W)	HH 12VDC (2.5W)	HJ 12VDC (3.0W)
HK 12VDC (4.0W)		

4 - Lead Length Options

O No Leads	A 18"	B 24"	C 36"
D 48"	E 72"	F 96"	H 144"

5 - Solenoid Can (round)

C For Top Cover Option and Can w/ Outer Threads

6 - Solenoid Cover

JST	Pico	Flying Leads	
TA		BA	No ground wire
TC	PC	BC	Blocking & suppr. diode & LED (no ground)
TE	PE	BE	Blocking & suppr. diode (no ground)
TG	PG	BG	LED (no ground)
TJ	PJ	BJ	MOV (no ground)
TL	PL	BL	LED & MOV (no ground)
	PN		Transfer Board
	fGA		MAC JAC Connector

Note: Pico covers PC-PL have a 3rd pin which is an isolation pin



BV321

3-Way, Cartridge Style, Universal or Normally Closed - 1.0Cv

How To Order Circuit Bar

3-Way

Port Size	Spacing	*Cylinder Port	*Cylinder Port
1/8"	25mm	*CCMV21A-00ABA-XX	**CCMV21A-00BBA-XX
1/4"	25mm	*CCMV21A-00ABB-XX	**CCMV21A-00BBB-XX

* - Side Cylinder Port ** - Bottom Cylinder Port

XX = Number of stations

Note: For valves mounted to bar at factory, add -9 to model number.

Common inlet & exhaust are 1/4" NPTF. For BSPPL or BSPTR threads consult MVP

