

High-Flow VANGUARD FRLs Filter-Regulator-Lubricators

BFDRL289D Models Port Sizes: 1-1/4, 1-1/2



Model Shown: BFDRL289D-12

SPECIFICATIONS

Ambient/Media Temperature:

Manual & automatic drains: 40° to 175°F (4° to 79°C).
Float drain: 40° to 150°F (4° to 66°C).

Bowls: 35-Ounce (1 liter) capacity aluminum bowls with clear nylon sight glass. Optional 62-ounce (1830-ml) capacity extended lubricator bowl with two sight glasses.

Bowl Rings: Aluminum.

Filter Drain:

Internal automatic drain. Optional manual drain, internal float drain, external Hydro-Jector drain, or Warrior electronic drain.

Filter Element: 40-µm-rated sintered bronze; optional 5-µm sintered bronze.

Fluid Media: Compressed air.

Heads: Aluminum.

Inlet Pressure:

Minimum: 15 psig (1 bar) with automatic drain, 30 psig (2 bar) with internal float drain.
Maximum: 200 psig (14 bar).

Oil Adjustment: External; tamper-resistant.

Outlet Pressure: Adjustable up to 100 psig (7 bar).

Pressure Adjustment Locking Key: Removable.

Pressure Gauge: 0 to 200 psig (14 bar); 1/4 NPT gauge ports front and rear.

Regulator: Nylon dome; acetal knob. Aluminum dome with optional 0-150 psig spring.

Seals: Nitrile.

Sight Dome: Clear nylon.

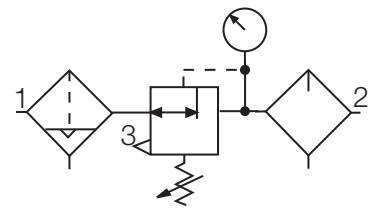
- ◆ Individual filter (**BFD200**); piston-type regulator (**R180**); sight-feed lubricator (**BL29D**).
- ◆ Inline mounting.
- ◆ 40-µm-rated sintered bronze filter element; optional 5-µm sintered bronze element.
- ◆ Aluminum bowls with clear nylon sight glass. Optional extended lubricator bowl.
- ◆ Internal automatic filter drain. Optional manual drain, internal float drain, external Hydro-Jector drain, or Warrior electronic drain.
- ◆ Self-relieving regulator; non-relieving optional.
- ◆ Pressure gauge.
- ◆ NPTF port threads; optional BSPP threads.

AIR FLOW DATA

See Flow Charts for individual assembly components on preceding pages.

ISO FRL Symbol

Automatic Drain
Self-relieving

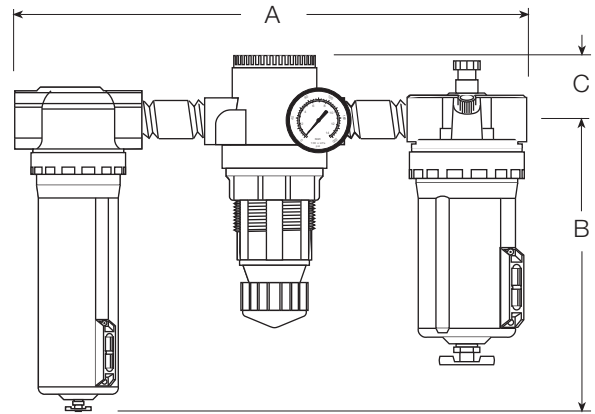


REPLACEMENT FILTER ELEMENT KITS

Element Type	Kit Number
40-µm bronze (Std element)	A114-106E3
5-µm bronze	A114-106E5

DIMENSIONS inches (mm)

				Weight
A	B	C	Depth	lb (kg)
15.8 (401)	10.6 (268)	2.1 (54)	4.3 (108)	8.00 (3.64)



ORDERING INFORMATION

Change the letters in the sample model number below to specify the FRL you want.

NOTE: For model numbers longer than 15 characters, please consult Master Pneumatic.

B FD R L 2 8 9D - 10 Y NG W

FILTER DRAIN

- Internal automatic drainFD
- Manual drain.....F
- Internal float drainF6A
(Brass stem).
- External Hydro-Jector drainFE
- Warrior electronic drainF2A

REGULATOR

- No Regulator Leave Blank
- Regulator R

LUBRICATOR

- No Lubricator Leave Blank
- Lubricator..... L

FILTER WITH DIFFERENTIAL GAUGE OPTION

Only applies to standard filter option above. Coalescent options are setup separately in another section.

- No Filter 1
- Standard filter no tapped head 2

Anyone requiring a filter and/or coalescing filter with a differential pressure gauge, contact factory for number.

REGULATOR

- No Regulator 0
- Regulator 8

LUBRICATOR

- No Lubricator 0
- Lubricator..... 9D

PORT SIZE

- 1-1/4 NPTF 10
- 1-1/2 NPTF 12

PORT TYPE

- NPTF threads Leave Blank
- BSPP threads W

GAUGE

- 0-200 psig GaugeLeave Blank
- No gauge NG

OPTIONS (*More than one option can be chosen. Add in alphabetical order*)

- NoneLeave Blank
- Non-relieving regulator.....A
- Sintered bronze filter element:
5-µm rating E5
- Adjusting springs:
0-150 psig (0-10 bar) H **
- 0-50 psig (0-3.4 bar)..... L
- Delete bowl drain; 1/4 NPT
female port insteadLDC
- Metal Dome MD
- Limit maximum psig setting M*
- Regulator tee handle T
- Quick-fill lubricator Q-capQ

* Insert maximum limited ressure.

** H option spring includes metal dome.