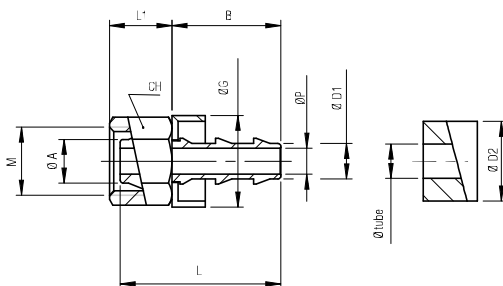


13800

FEMALE HOSE ADAPTER FOR LOCKING HOSE SELF

Assembling

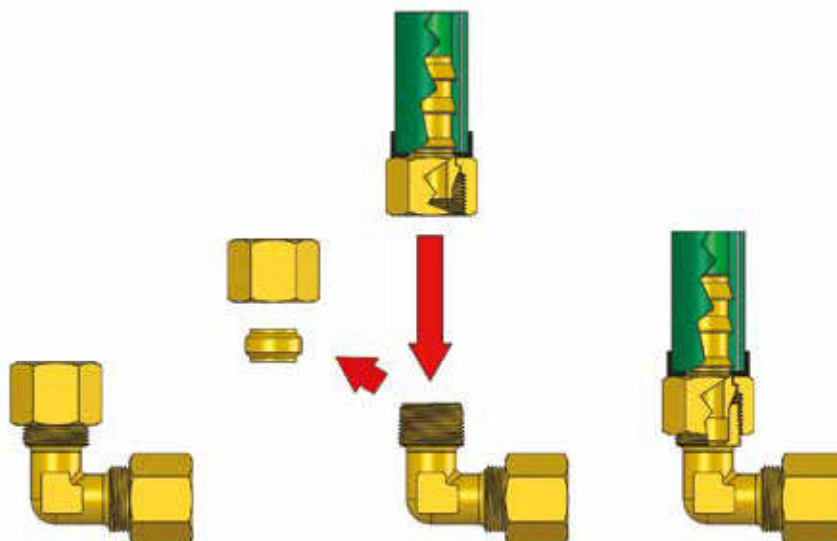


Code	Tube	M	Ø A	Ø D1	Ø D2	CH	Ø G	L	B	L1	Ø P	Pack.
13800 00 001	1/4	M10x1	6	6.5	13	12	16.7	32.5	20	11.5	4.8	10
13800 00 002	1/4	M12X1	8	6.5	13	14	16.7	29.5	20	12.5	4.8	10
13800 00 003	1/4	M16x1.5	10	6.5	13	19	16.7	30.5	24	14	4.8	10
13800 00 004	3/8	M16x1.5	10	9.5	16	19	19.5	34.5	24	14	7.5	10
13800 00 005	3/8	M20x1.5	14	9.5	16	24	19.5	36	28	15	7.5	10
13800 00 006	1/2	M20x1.5	14	12.7	19	24	23.5	40	28	15	10	10
13800 00 007	1/2	M24x1.5	18	12.7	19	30	23.5	40.5	36.5	17	10	10
13800 00 008	5/8	M24x1.5	18	15.7	23	30	27.3	49	36.5	17	13.5	10
13800 00 009	3/4	M30x1.5	22	18.8	27	36	30.8	57.5	43	17	16	10



GB

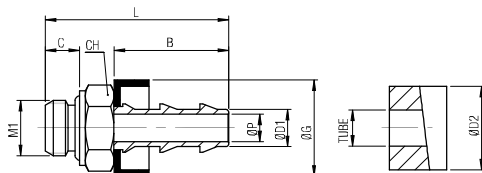
For each item of the 13000 serie, y the nut
and the olive and connect with the art. 13800.
See "Ø A" for nut size.



13810

MALE HOSE ADAPTER FOR LOCKING HOSE SELF

Assembling

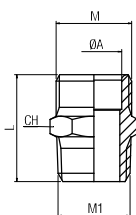


Code	Tube	M1	Ø D1	Ø D2	CH	Ø G	L	B	C	Ø P	Pack.
13810 00 001	1/4	1/8	6.5	13	13	16.7	32	20	6	4.8	10
13810 00 002	1/4	1/4	6.5	13	17	16.7	35.5	20	8	4.8	10
13810 00 003	3/8	1/4	9.5	16	17	19.5	39.5	24	8	7.5	10
13810 00 004	3/8	3/8	9.5	16	22	19.5	41	24	9	7.5	10
13810 00 005	1/2	3/8	12.7	19	22	23.5	45	28	9	10	10
13810 00 006	1/2	1/2	12.7	19	27	23.5	47	28	10	10	10
13810 00 007	5/8	1/2	15.7	23	27	27.3	55	36.5	10	13.5	10
13810 00 008	5/8	3/4	15.7	23	32	27.3	58.5	36.5	12	13.5	10
13810 00 009	3/4	3/4	18.8	27	32	30.8	65	43	12	16	10

13820

NIPPLE

Assembling



Code	M	M1	Ø A	L	CH	Pack.
13820 00 001	M10x1	1/8	6	20	11	10
13820 00 002	M10x1	1/4	6	23,5	14	10
13820 00 003	M10x1	3/8	6	24	17	10
13820 00 004	M12x1	1/8	8	20,5	13	10
13820 00 005	M12x1	1/4	8	24	14	10
13820 00 006	M12x1	3/8	8	24,5	17	10
13820 00 007	M16x1,5	1/4	10	26	16	10
13820 00 008	M16x1,5	3/8	10	26,5	17	10
13820 00 009	M16x1,5	1/2	10	28	21	10
13820 00 010	M20x1,5	3/8	14	26,5	20	10
13820 00 011	M20x1,5	1/2	14	29	21	10
13820 00 012	M24x1,5	1/2	18	31	24	10
13820 00 013	M24x1,5	3/4	18	32,5	27	10
13820 00 014	M30x1,5	3/4	22	33,5	30	10
13820 00 015	M30x1,5	1/2	22	32	30	10