





contents of this product guide

	ODE ANGLE SEAT - 2/2 Way N.C. 21A4 to 21A9 - Stainless Steel	01 - 02
	ODE SOLENOID - 2/2 Way N.C. 21A2K/21A3K - Direct Acting 21A5K/21A8K - Direct Acting 21JN1R0 - Direct Acting 21H7KB/21H8KB - Pilot Control 21WA3/21WA4 - Pilot Control 21HT3K/21HT5K - Combined Operation 21HF6K/21HF8K - Combined Operation	03 - 04 05 - 06 07 - 08 09 - 10 11 - 12 13 - 14 15 - 16
	ODE SOLENOID - 2/3 Way N.C. - Direct Acting 31A1A-R - Direct Acting 31JN1XPV - Direct Acting 31A3A/31A2A - Direct Acting	17 - 18 19 - 20 21 - 22
	CAR WASH/MANIFOLD TYPE ODE SOLENOID - 2/2 Way N.C. Modular 4743K0V120 - Pilot Control	23 - 24
	DRINK/COFFEE DISPENSER TOTAL SEPARATION - 2/2 Way N.C. 21K72KR to 26K72KR - Direct Acting 21K72RR to 26K72RR - Direct Acting Coffee Machine Product Index	25 - 26 27 - 28 29
	ODE COILS 5Watt, 8Watt, 14Watt	30



ODE ANGLE SEAT - 21IA4 to 21IA9

2 way N.C. | Direct Acting | Stainless Steel

PRESENTATION:

Flow direction below seat, angle seat pilot valve.
 Pneumatically actuated, high flow rate due to the bodys angle seat configuration.
 Anti water-hammer functioning with entry below seat.
 Pneumatic controlled valve with stainless steel body.
 Pneumatic actuator (360° rotation).
 Optical position indicator.
 Can be used with back pressure for gases (the back pressure must not pass the functioning max pressure - see MOPD chart).
 Self trimming packing gland - maintenance free.
 Can be setup in all positions.

PIPES: G1/2 - G2

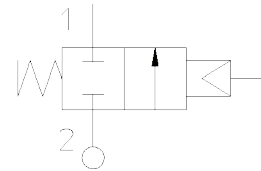
USE: Automation, Heating, Water, Hot Water, Steam(180°C), Aggressive, Food Fluids

VALVE FEATURES:

Fluid Temperature -10°C +180°C
 Environment Temp. -10°C +60°C
 Material Stainless Steel AISI Series 316
 Seal PTFE
 Packing Gland PTFE, FKM

PILOT ACTUATOR FEATURES:

Fluid Dry air or lubricated, gas and neutral fluids
 Fluid Temperature Max +60°C
 Body Polyamide 66 with 30% glass
 Gaskets NBR
 Actuator O70



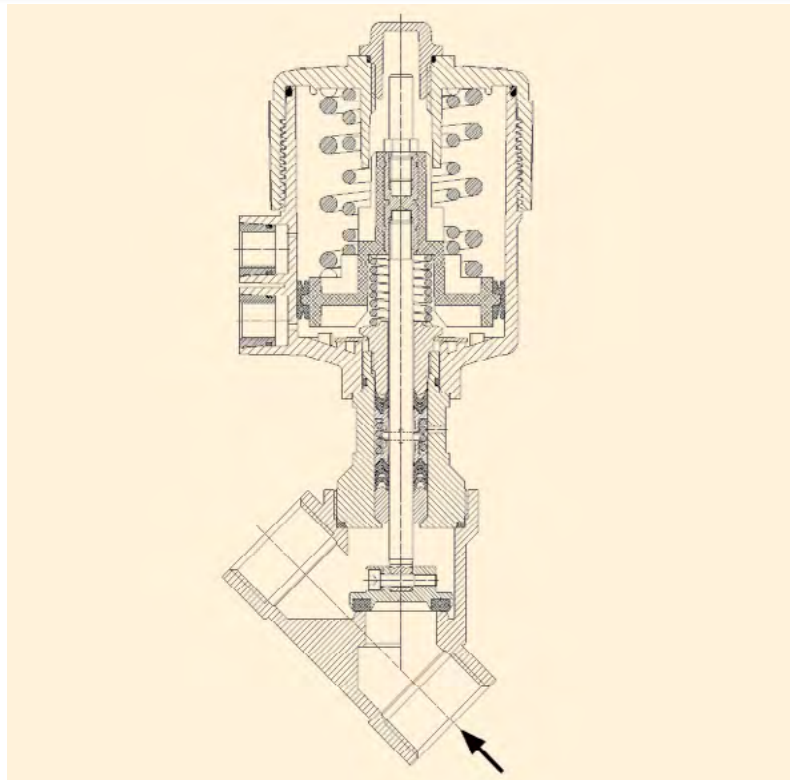
2-WAY ANGLE SEAT

Pipe ISO2 28/1	Code	Ø mm	Kv l/mn	Actuator pildt pressure (bar)		Differential pressure (bar)		Max. allowable pressure PS (bar)K	Weight g
				minm	ax	minm	ax		
G1 /2	21I A4T15G C2	15	80	4	10	0	16	40	1,4
G3 /4	21I A5T20G C2	20	150				10		1,5
G1	21I A6T25G C2	25	190				10		1,8
G1 1/4	21I A7T32G C2	32	340				7	25	2,4
G1 1/2	21I A8T40G C2	40	430				4,5		2,7
G2	21I A9T50G C2	50	620				3	16	3,9

Note :
 Available on request - Pilot Valve 31 A2AV20+BDA.
 Together with male thread nipple G1/4 - G1/4.
 Material compatability with the fluids to be checked.
 The "ODE " reserves the right to carry out technical and aesthetic modifications without prior notification.

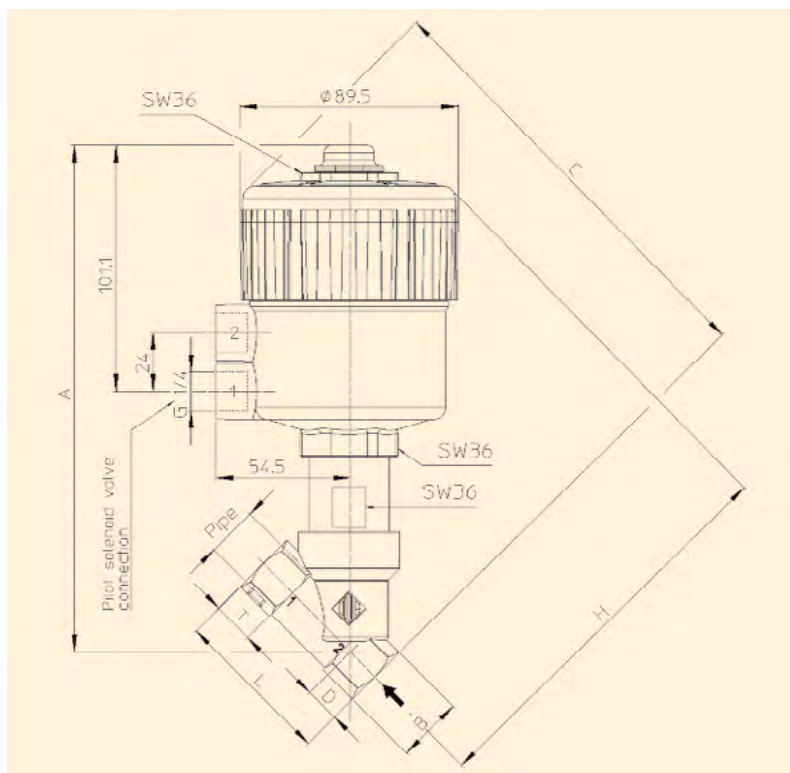


CE Approval
 (Pressure Equipment Directive 97/23/CE)
 for S.V. 21IA7 - 21IA9



**2-WAY
ANGLE SEAT**

Pipe ISO 228/1	A mm	B mm	C mm	D mm	E mm	H mm	L mm	T mm
G 1/2	206,8	SW 27	178,7	15,4	SW 30	163,3	65	17
G 3/4	211,7	SW 32	188,6	21,9	SW 36	166,7	75,5	19
G1	220,1	SW 41	197,8	25,1	SW 36	172,7	90	21
G1 1/4	235,9	SW 50	212,3	28,5	SW 41	183,8	110	24
G1 1/2	238,9	SW 55	217,0	31,0	SW 41	186	122	25,2
G2	247,8	SW 70	229,7	37,5	SW 41	192,2	151	28,5



ODE SOLENOID - 21A3K to 21A2K

2 way N.C. | Direct Acting

PRESENTATION:

Direct acting S.V. for interception of fluids compatible with the construction materials.
Minimum operational pressure is not required.
The materials used and the tests carried out ensure maximum reliability and duration.

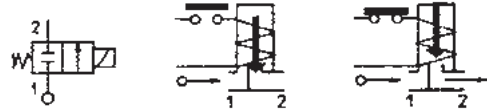
PIPES: G1/8 - G1/4

USE: Automation, Heating

VALVE FEATURES:

- 8W - Ø13*
- BDA - BDS - BSA 155°C (class F)
- BDP 160°C (high temp.)
- BDF 180°C (class H)
- SDH 180°C (class H)
- 12W - Ø13
- UDA 155°C (class F)
- 14W - Ø13
- GDH 180°C (class H)

* Explosion-proof housing for coils with electrical connections EN 175301-803 on request.



Max. allowable pressure (PS) 40 bar
Environment temperature:
With coil class F and high temperature -10°C + 60°C
With coil class H -10°C + 80°C

**2-WAY
DIRECT ACTING**

Gaskets	Temperature	Medium
V=FKM (fluoroelastomer)	-10°C +140°C	Mineral oils (2°E), gasoline gas oil, fuel oils (7°E)
B=NBR (nitrile rubber)	-10°C +90°C	Air, inert gas, water
E=EPDM (ethylene-propylene)	-10°C +140°C	Water, steam

HIGHLIGHTED ITEMS ARE EX STOCK

For seals other than FKM replace the letter "V" with the ones corresponding to the other seals. i.e. 21A3KE20.

21A3K TABLE

Pipe ISO 228/1	Code	Max viscosity		Ø mm	Kv l/min	Power (watt)	Pressure		
		cSt°	E				mi bar	M.O.P.D. AC bar DC bar	
G 1/8	21A3K V151	2~	2	1,5	1,4	8	0	30	18
	21A3K V203	7~	5	22		12		22	16
						14		35	30
	21A3K V25			2,5	3,2	8		14	9
						12		30	25
	21A3K V30			3	4	8		10	6
						12		25	18
	21A3K V45			4,5	6,5	14		20	2
						8		5	2
						12		7	7
						14		12	8

Note: Also available with brass body without lead.
"ODE" reserves the right to carry out technical and aesthetic modifications without prior notification.

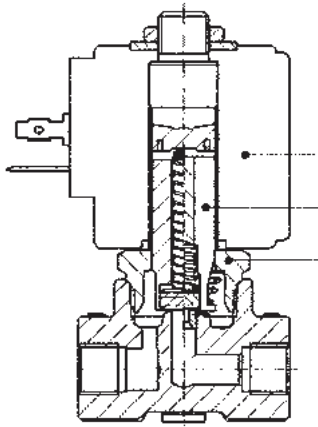


HIGHLIGHTED ITEMS ARE EX STOCK

For seals other than FKM replace the letter "V" with the ones corresponding to the other seals. i.e. 21A2KE20.

21A2K TABLE

Pipe ISO 228/1	Code	Max viscosity		Ø mm	Kv /min	Power (watt)	Pressure		
		cSt°	EI				min bar	M.O.P.D.	
								AC bar	DC bar
G 1/4	21A2K V151	12	~2	1,5	1,4	8	0	30	18
	21A2K V20	37~	5	2	2	12		22	16
					14	35		30	
	21A2K V25	53	~7	2,5	3,2	8		14	9
					12	30		25	
	21A2K V30	~7	3,	4	8	10		6	18
					12	25		20	
	21A2K V45	~7	4,5	6,5	8	5		2	7
					12	12		8	
	21A2K V55	~7	5,5	9	8	3		1	8
					12	7		2,5	
						14		10	5



MATERIALS:

Body	Brass - UNI EN 12165 CW617N
Armature tube	Stainless steel AISI series 300
Fixed core	Stainless steel AISI series 400
Plunger	Stainless steel AISI series 400
Phase displacement ring	Copper - Cu 99,9%
Spring	Stainless steel AISI series 300
Seal	Standard: V=FKM On request: B=NBR E=EPDM

ORIFICE:

<3 mm Insert slot	Stainless steel AISI series 300
>3 mm	Brass - UNI EN 12165 CW617N

ON REQUEST:

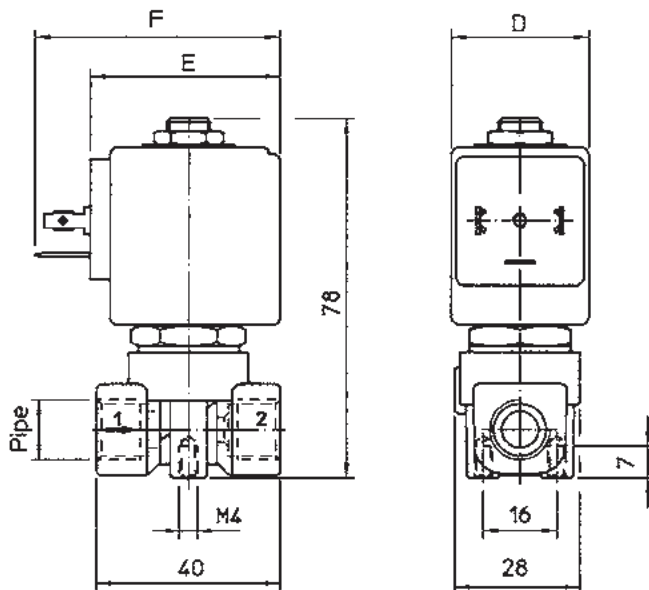
Connector	Pg 9 or Pg 11
Connector conformity	ISO 4400

FEATURES:

Electrical conformity	IEC 335
Protection degree	IP65 EN 60529 (DIN 40050) with coil fitted by connector.

SPARE PARTS:

- Coil: See coils list
- Complete plunger:
For orifice <3 mm
Code R450886/V
For orifice >3 mm
Code R450898/V
- Complete armature tube:
Code R450606



DIMENSIONS:

Type	Pipe ISO 228/1
21A3KV	G 1/8
21A2KV	G 1/4

COIL W	POWER ABSORPTION		TYPE	DIMENSIONS		
	Inrush VA~	Hold VA~		D mm	E mm	F mm
8 W	25	14,5	B	30	42	54
			S	32		
12 W	35	25	U	36	48	60
14 W	43	27	G	52	55	67

2-WAY
DIRECT ACTING

ODE SOLENOID - 21A5K to 21A8K

2 way N.C. | Direct Acting

PRESENTATION: Direct acting S.V. for interception of fluids compatible with the construction materials. Minimum operational pressure is not required. The materials used and the tests carried out ensure maximum reliability and duration.

PIPES: G3/8 - G1/2

USE: Automation, Heating

VALVE FEATURES:

8W - Ø13			
BDA - BDS - BSA	155°C	(class F)	
BDF - BDV	180°C	(class H)	
12W - Ø13			
UDA	155°C	(class F)	
14W - Ø13			
GDH - GDV	180°C	(class H)	

Max. allowable pressure (PS) 40 bar
 Environment temperature:
 With coil class F and high temperature - 40°C + 60°C
 With coil class H - 40°C + 80°C

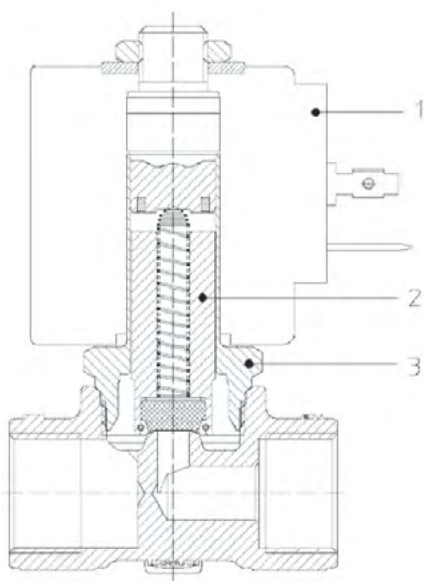


Gaskets	Temperature		Medium
	-40°C	+180°C	
T=PTFE (polytetrafluorethylen)			Water, Steam



2-WAY
DIRECT ACTING

Pipe ISO 228/1	Code	Max viscosity		Ø mm	Kv l/mn	Power (watt)	Pressure		
		cSt	°E				min bar	M.O.P.D.	
							AC bar	DC bar	
G 3/8	21A5KT45	-	-	4,5	6,5	8	0	5	1,5
						12		10	3,5
						14		12	6
	21A5KT55			8	3,5	1			
				12	6	2			
				14	7	5			
G 1/2	21A8KT45	-	-	4,5	6,5	8	5	1,5	
						12	10	3,5	
						14	12	6	
	21A8KT55			8	3,5	1			
				12	6	2			
				14	7	5			



MATERIALS:

Body	Brass - UNI EN 12165 CW617N
Armature tube	Stainless steel AISI series 300
Fixed core	Stainless steel AISI series 400
Plunger	Stainless steel AISI series 400
Phase displacement ring	Copper - Cu 99,9%
Spring	Stainless steel AISI series 300
Seal	T=PTFE
Orifice	Brass - UNI EN 12165 CW617N

ON REQUEST:

Connector conformity	ISO 4400
----------------------	----------

FEATURES:

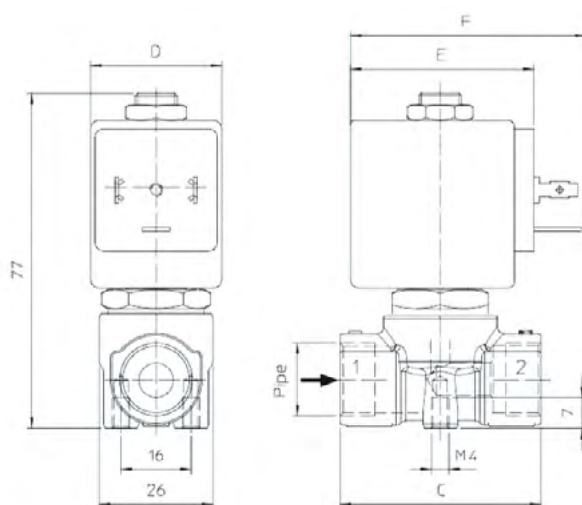
Electrical conformity	IEC 335
Protection degree	IP65 EN 60529 (DIN 40050) with coil fitted by connector.

SPARE PARTS:

1. Coil: See coils list
2. Complete plunger: Code R451234/T
3. Complete armature tube: Code R450606

KIT:

KT130KT55-A=2+3



Type	Pipe ISO 228/1	C mm
21A5KT	G 3/8	46
21A8KT	G 1/2	58

COIL TYPE	POWER ABSORPTION			DIMENSIONS		
	W ---	Hold VA ~	Inrush VA ~	D mm	E mm	F mm
B	8	14,5	25	30	42	54
U	12	23	35	36	48	60
G	14	27	43	52	55	67

**2-WAY
DIRECT ACTING**

ODE SOLENOID - 21JN1R0

2 way N.C. | Direct Acting

PRESENTATION:

Direct acting S.V for interception of fluids compatible with the construction materials.
Minimum operational pressure is not required.
The materials used and the tests carried out ensure maximum reliability and duration.

PIPES: G1/8

USE: Automation, Heating

COILS:

2.5W - Ø10

LBA 155°C (class F)

5W - Ø10

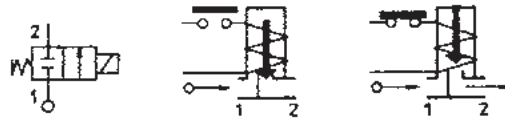
LBA 155°C (class F)

LBF 180°C (class H)



MOULDING AND BOBBIN ARE MADE WITH 100% VIRGIN MATERIAL

Max. allowable pressure (PS) 40 bar
Environment temperature:
With coil class F and high temperature - 10°C + 60°C
With coil class H - 10°C + 80°C



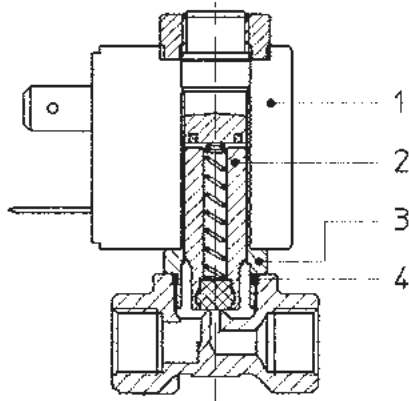
**2-WAY
DIRECT ACTING**

Gaskets	Temperature		Medium
V=FKM (fluoroelastomer)	-10°C	+140°C	Mineral oils (2°E), gasoline gas oil, fuel oils (5E)
B=NBR (nitrile rubber)	-10°C	+90°C	Air, inert gas, water

For seals other than FKM replace the letter “V” with the ones corresponding to the other seals. i.e. 21H7KV120.

Pipe ISO 228/1	Code	Max viscosity		Ø mm	Kv /min	Power (watt)	Pressure		
		cSt*	EI				minM bar	O.P.D. AC bar DC bar	
G 1/8	21JN1R0 V12	12	~2	1,2	1	2,5	0	20	3,5
						5		25	12
	21JN1R0 V23	37	~5	2,3	2,3	2,5		6	-
						5		18	8

Note: Also available with brass body without lead.
“ODE” reserves the right to carry out technical and aesthetic modifications without prior notification.



MATERIALS:

Body	Brass
Armature tube	Stainless steel AISI series 300
Fixed core	Stainless steel AISI series 400
Plunger	Stainless steel AISI series 400
Phase displacement ring	Copper - Cu 99,9%
Spring	Stainless steel AISI series 300
Seal	Standard: V=FKM On request: B=NBR

ORIFICE: Brass

ON REQUEST:

Connector	Please request
Connector conformity	ISO 4400

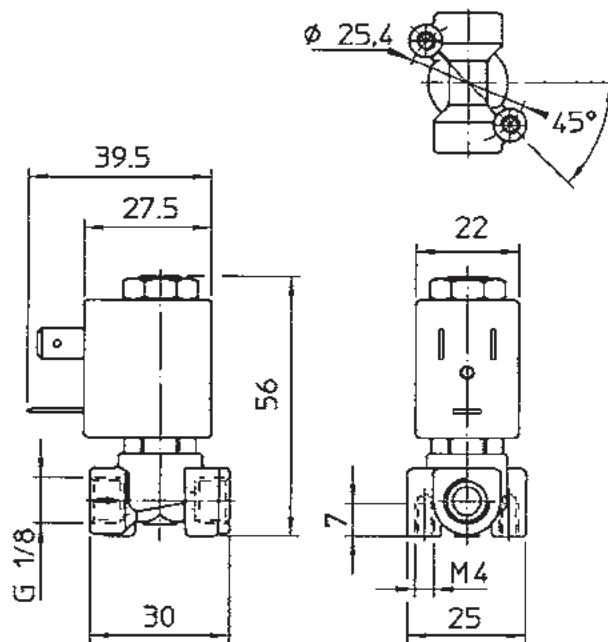
FEATURES:

Electrical conformity	IEC 335
Protection degree	IP65 EN 60529 (DIN 40050) with coil fitted by connector.

SPARE PARTS:

1. Coil: See coils list
2. Complete plunger: Code R451101/V
3. Complete armature tube: Code R452061
4. Gasket O-Ring: Code R990597/V

MANTENANCE KIT: KT100R0V25-FJ = 2+3+4



COIL	POWER ABSORPTION	
	Inrush VA~	Hold VA~
2,5 W	7	4
5 W	15	11

**2-WAY
DIRECT ACTING**

ODE SOLENOID - 21H7K to 21H8K

2 way N.C. | Pilot Control

PRESENTATION:

S.V. with pilot control with interception of fluids compatible with the construction materials.

Minimum operational pressure of 0.1bar is required.

The materials used and the tests carried out ensure maximum reliability and duration.

PIPES: G3/8 - G1/2

USE: Automation, Heating

VALVE FEATURES:

8W - Ø13

BDA - BDS - BSA 155°C (class F)

BDP 160°C (high temp.)

BDF 180°C (class H)

SDH 180°C (class H)

12W - Ø13

UDA 155°C (class F)

14W - Ø13

GDH 180°C (class H)

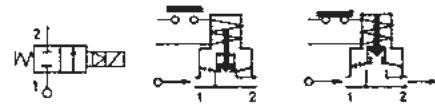


Max. allowable pressure (PS) 20 bar

Environment temperature:

With coil class F and high temperature - 10°C + 60°C

With coil class H - 10°C + 80°C



**2-WAY
DIRECT ACTING**

Gaskets	Temperature		Medium
V=FKM (fluoroelastomer)	-10°C	+140°C	Mineral oils (2°E), gasoline gas oil
B=NBR (nitrile rubber)	-10°	+ 90°	Air, inert gas, water
E=EPDM (ethylene-propylene)	-10°C	+140°	Water, low pressure steam

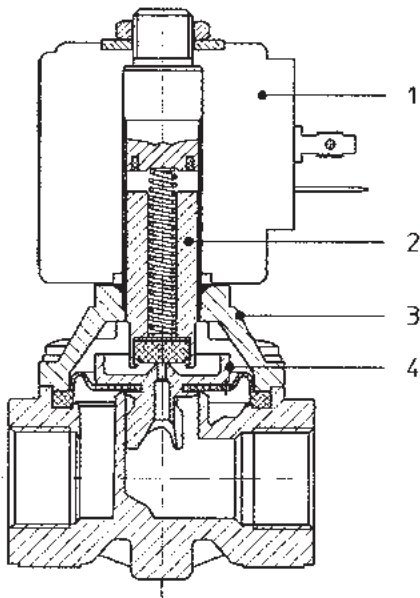
HIGHLIGHTED ITEMS ARE EX STOCK

For seals other than FKM replace the letter "V" with the ones corresponding to the other seals. i.e. 21H7KV120.

Pipe ISO 228/1	Code	Max viscosity		Ø mm	Kv /min	Power (watt)	Pressure		
		cSt°	EI				minM bar	.O.P.D. AC bar DC bar	
G 3/8	21H7K V 120	12	~ 2	12	35	0,1	20	8	10
								12	20
								14	20
G 1/2	21H8K B 120	12	~ 2	12	45	0,1	20	8	10
								12	20
								14	20

Note: Also available with brass body without lead.

"ODE" reserves the right to carry out technical and aesthetic modifications without prior notification.



MATERIALS:

Body Brass - UNI EN 12165 CW617N
 Armature tube Stainless steel AISI series 300
 Fixed core Stainless steel AISI series 400
 Plunger Stainless steel AISI series 400
 Phase displacement ring Copper - Cu 99,9%
 Spring Stainless steel AISI series 300
 Seal Standard: V=FKM
 On request: B=NBR E=EPDM

ORIFICE:

Brass - UNI EN 12165 CW617N

ON REQUEST:

Connector Pg 9 or Pg 11
 Connector conformity ISO 4400

FEATURES:

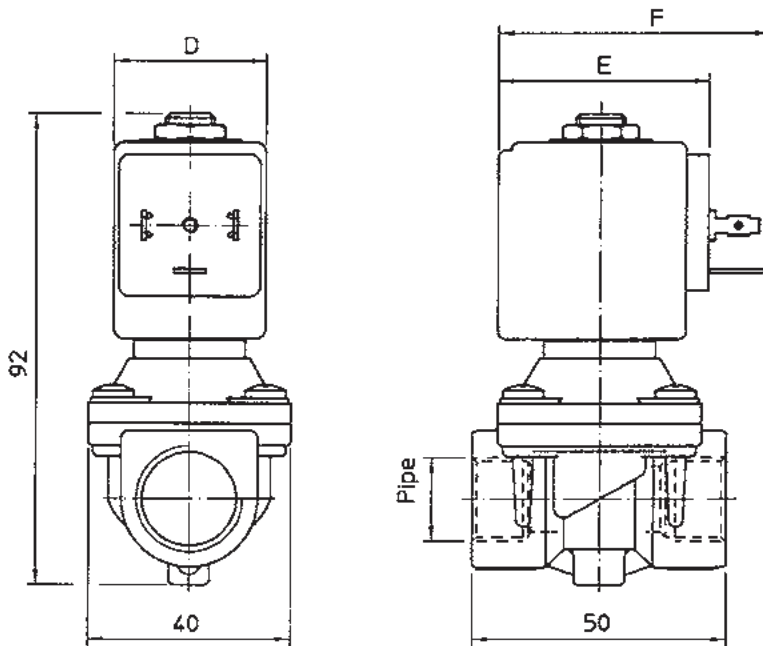
Electrical conformity IEC 335
 Protection degree IP65 EN 60529 (DIN 40050)
 with coil fitted by connector.

SPARE PARTS:

1. Coil: See coils list
 2. Complete plunger: Code R450284/V
 3. Complete armature tube: Code R450938
 4. Complete diaphragm: Code R450916/V

MANITENANCE:

KTGOH7KV12=2+4



Type	Pipe ISO 228/1
21H7KV120	G 3/8
21H8KV120	G 1/2

COIL W ---	POWER ABSORPTION		TYPE	DIMENSIONS		
	Inrush VA~	Hold VA~		DE mm	mm	F mm
8 W	25	14,5	B3	0	42	54
			S3	2		
12 W	35	25	U3	64	86	0
14 W	43	27	G5	25	56	7

**2-WAY
DIRECT ACTING**

ODE SOLENOID - 21WA3KO to 21WA4KO

2 way N.C. | Pilot Control

PRESENTATION:

S.V. with pilot control with interception of fluids compatible with the construction materials.

A minimum operational pressure of 0,2 bar is required.

The materials used and the tests carried out ensure maximum reliability and duration.

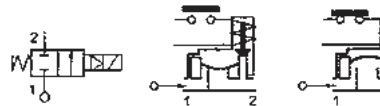
PIPES: G3/8 - G1/2

USE: Automation, Heating

COILS: 8W - Ø13

BDA - BDS - BSA	155°C	(class F)
BDP	160°C	(high temp.)
BDF	180°C	(class H)
SDH	180°C	(class H)

Max. allowable pressure (PS) 20 bar
 Environment temperature:
 With coil class F and high temperature - 10°C + 60°C
 With coil class H - 10°C + 80°C



Gaskets	Temperature		Medium
B=NBR (nitrile rubber)	- 10°C	+ 90°C	Air, inert gas, water
V=FKM (fluoroelastomer)	- 10°C	+140°C	mineral oils (2°E), gasoline gas oil

HIGHLIGHTED ITEMS ARE EX STOCK

For seals other than FKM replace the letter "V" with the ones corresponding to the other seals. i.e. 21WA3KOV130.

Pipe ISO 228/1	Code	Max viscosity		Ø m	Kv (l/mn)	Power watt	Pressure		
		cSt°	Em				min bar	M.O.P.D. AC bar DC bar	
G 3/82	21WA3KOV130	12	~2	13	60	8	0,2	16	16
G 1/22	21WA4KOV130				70				

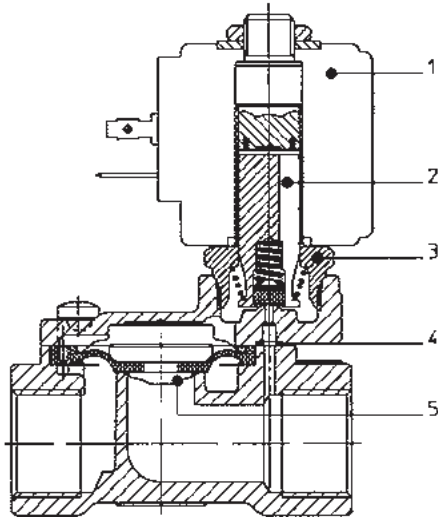
Note: Also available with brass body without lead.
 "ODE" reserves the right to carry out technical and aesthetic modifications without prior notification.

2-WAY
DIRECT ACTING



MATERIALS:

Body	Brass - UNI EN 12165 CW617N
Armature tube	Stainless steel AISI series 300
Fixed core	Stainless steel AISI series 400
Plunger	Stainless steel AISI series 400
Phase displacement ring	Copper - Cu 99,9%
Spring	Stainless steel AISI series 300
Seal	Standard: B=NBR On request: V=VKM



ORIFICE: Brass - UNI EN 12165 CW617N

ON REQUEST: Connector Please request
Connector conformity ISO 4400

FEATURES:

Electrical conformity	IEC 335
Protection degree	IP65 EN 60529 (DIN 40050) with coil fitted by connector.

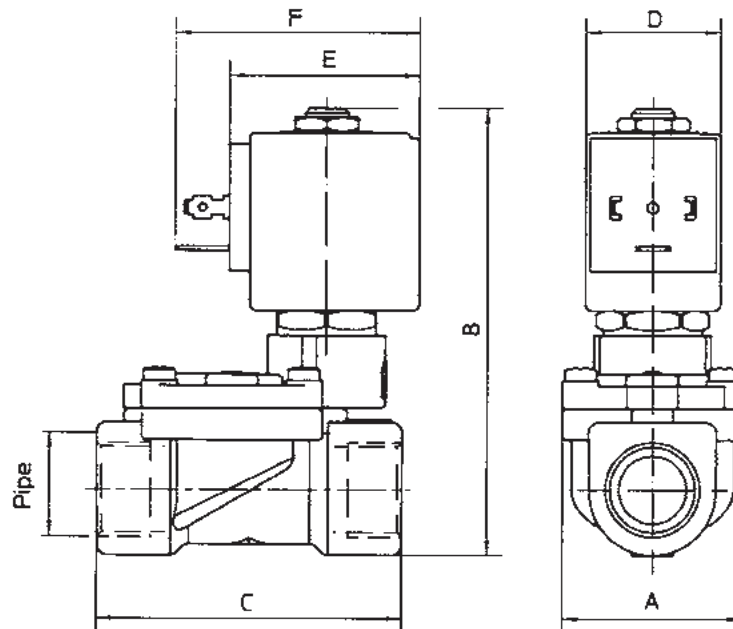
SPARE PARTS:

1. Coil: See coils list
2. Complete plunger: Code R450886/B
3. Complete armature tube: Code R450606
4. Gasket O-Ring: Code R990300/B
5. Complete Diagram: Code R452186/B

KIT: KT130K B 30 - A = 2+3

MAINTENANCE KIT: KTGWA3K0 B 13 = 2+4+5

**2-WAY
DIRECT ACTING**



Type	Pipe ISO 228/1	A mm	B mm	C mm
21WA3K0B130	G 3/8	40	97	60
21WA4K0B130	G 1/2			66

COILD W	POWER ABSORPTION		TYPE	DIMENSIONS		
	Inrush VA~	Hold VA~		D mm	E mm	F mm
8W	25	14,5	B3	0	42	54
			S3	2		

ODE SOLENOID - 21HT3K to 21HT5K

2 way N.C. | Combined Operation

PRESENTATION:

Combined operation S.V. for interception of fluids compatible with construction materials.
Minimum operational pressure is not required.
The materials used and the tests carried out ensure maximum reliability and duration.

PIPES: G3/8 - G3/4

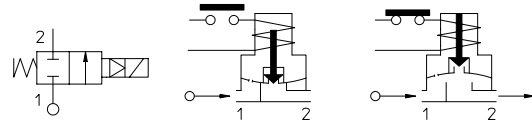
USE: Automation, Vacuum Packaging, Heating

VALVE FEATURES:

8W - Ø13		
BDA - BDS - BSA	155°C	(class F)
BDF - BDV	180°C	(class H)
12W - Ø13		
UDA	155°C	(class F)
14W - Ø13		
GDH - GDV	180°C	(class H)



Max. allowable pressure (PS) 16 bar
Environment temperature:
With coil class F - 10°C + 60°C
With coil class H - 10°C + 80°C

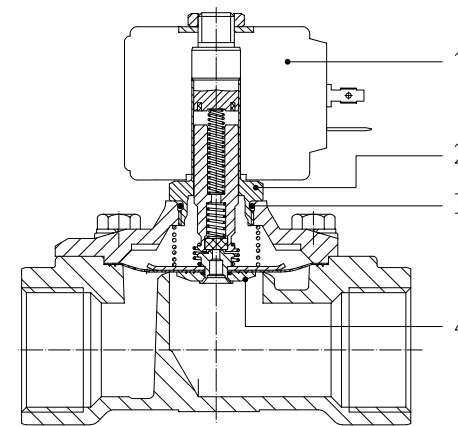
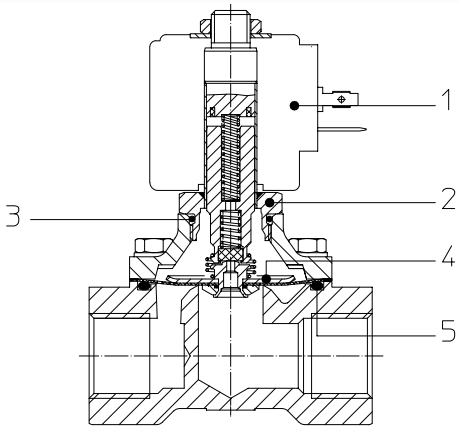


**2-WAY
COMBINED OP.**

Gaskets	Temperature		Medium
Y=NBR (nitrile rubber) + P A (polyamide)	- 10°C	+ 90°C	Air, gasoline, fuel oils, inert gas, water
V=FKM+ PA (fluorelastomer+poliamide)	- 10°C	+140°C	Mineral oils (2°E), gasoline gas oil

For seals other than FKM replace the letter "V" with the ones corresponding to the other seals. E.I. 21HT3K0V110.

Pipe ISO 228/1	Code	Max viscosity		Ø mm	Kv l/mn	Power (watt)	Pressure		
		cSt	°E				min barA	M.O.P.D. Cb ar DC bar	
G3/8	21HT3K0Y110	12	~2	11	20	8	0	14	5
						12			14
						14			14
G 1/2	21HT4K0Y160	12	~2	16	40	8	0	14	2,5
						12			11
						14			14
G 3/4	21HT5K0Y160	12	~2	16	40	8	0	14	1,5
						12			11
						14			14



MATERIALS:

Body Brass - UNI EN 12165 CW617N
 Armature tube Stainless steel AISI series 300
 Fixed core Stainless steel AISI series 400
 Plunger Stainless steel AISI series 400
 Phase displacement ring Copper - Cu 99,9%
 Spring Stainless steel AISI series 300
 Seal Standard: Y=NBR+PA
 On request: V=FKM+PA

ORIFICE:

Brass - UNI EN 12165 CW617N

ON REQUEST:

Connector Pg 9 or Pg 11
 Connector conformity ISO 4400

FEATURES:

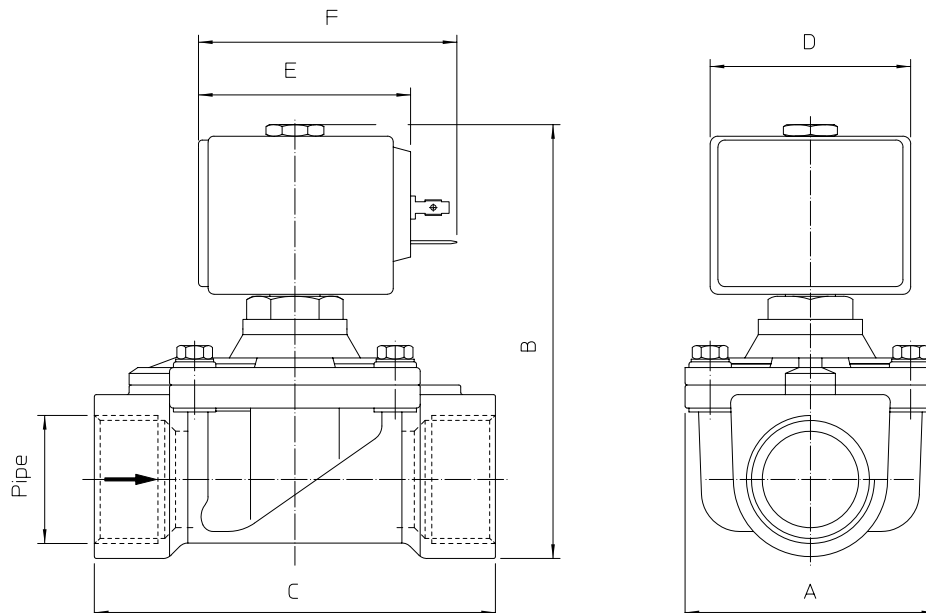
Electrical conformity IEC 335
 Protection degree IP65 EN 60529 (DIN 40050)
 with coil fitted by connector.

SPARE PARTS:

1. Coil: See coils list
2. Complete armature tube without gasket:
G3/8-G3/4 Code R450691
3. Gasket O-ring: Code R990000/B
4. Complete diaphragm with plunger:
G3/8 Code R452126/B
G12-3/4 Code R452125/B
5. Gasket O-ring: G3/8-G3/4 Code R990105

MAINTENANCE KIT:

G3/8 KTGHT3K0Y11=4+5
 G1/2-G3/4 KTGHT4K0Y16=4+5



Type	Pipe ISO 228/1	A mm	B mm	C mm
21HT3K0Y110	G3 /8	50	89	56
21HT4K0Y160	G1 /2		100	70
21HT5K0Y160	G3 /4			

COIL TYPE	POWER ABSORPTION			DIMENSIONS		
	W =	Hold VA~	Inrush VA~	D mm	E mm	F mm
B	8	14,5	25	30	42	54
U	12	23	35	36	48	60
G	14	27	43	52	55	67

**2-WAY
COMBINED OP.**

ODE SOLENOID - 21HF6K to 21HF8K

2 way N.C. | Combined Operation

PRESENTATION:

Combined operation S.V. for interception of fluids compatible with construction materials.

Minimum operational pressure is not required.

The materials used and the tests carried out ensure maximum reliability and duration.

PIPES: G1 - G1 1/2

USE: Automation, Heating

VALVE FEATURES:

8W - Ø13

BDA - BDS - BSA 155°C (class F)

BDF - BDV 180°C (class H)

12W - Ø13

UDA 155°C (class F)

14W - Ø13

GDH - GDV 180°C (class H)



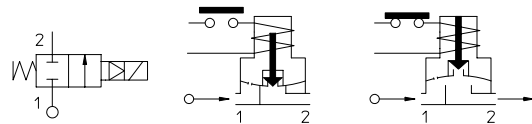
Max. allowable pressure (PS) 16 bar

Environment temperature:

With coil class F - 10°C + 60°C

With coil class H - 10°C + 80°C

**2-WAY
COMBINED OP.**



Gaskets	Temperature		Medium
	-10°C	+90°C	
B=NBR (nitrile rubber)	-10°C	+90°C	Air, inert gas, water
E=EPDM (ethylene-propylene)	-10°C	+140°C	Water, steam
V=FKM (fluoroelastomer)	-10°C	+140°C	Mineral oils (2°E), gasoline gas oil

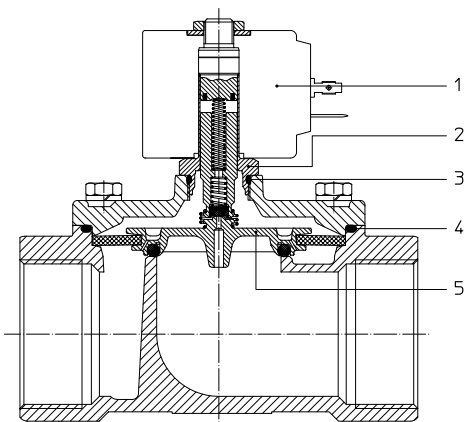
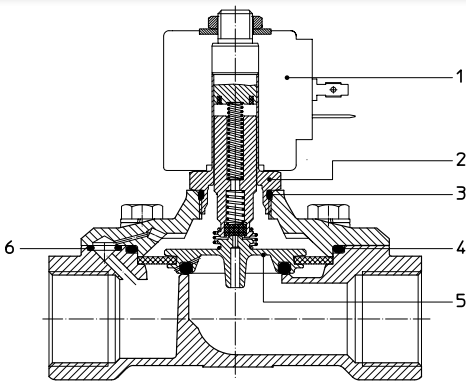
For seals other than FKM replace the letter "V" with the ones corresponding to the other seals. E.I. 21HF6K0B250.

Pipe ISO 228/1	Code	Max viscosity		Ø mm	Kv l/mn	Power (watt)	Pressure			
		cSt	°E				minM	.O.P.D.		
							barA	bar	DC bar	
G1	21HF6K0V250	12	~2	25	140	01	6	5	6	16
								-		-
								-		-
G1 1/4	21HF7K0V350	12	~2	35	270	01	6	-	6	6
								-		-
								-		-
G1 1/2	21HF8K0V400	12	~2	40	280	01	6	-	6	6
								-		-
								-		-



CE Approval

(Pressure Equipment Directive 97/23/CE)



MATERIALS:

- Body
- Armature tube
- Fixed core
- Plunger
- Phase displacement ring
- Spring
- Seal

- Brass - UNI EN 12165 CW617N
- Stainless steel AISI series 300
- Stainless steel AISI series 400
- Stainless steel AISI series 400
- Copper - Cu 99,9%
- Stainless steel AISI series 300
- Standard: V=FKM
- On request: E=EPDM, B=NBR

ORIFICE:

Brass - UNI EN 12165 CW617N

ON REQUEST:

- Connector
- Connector conformity

Pg 9 or Pg 11
ISO 4400

FEATURES:

- Electrical conformity
- Protection degree

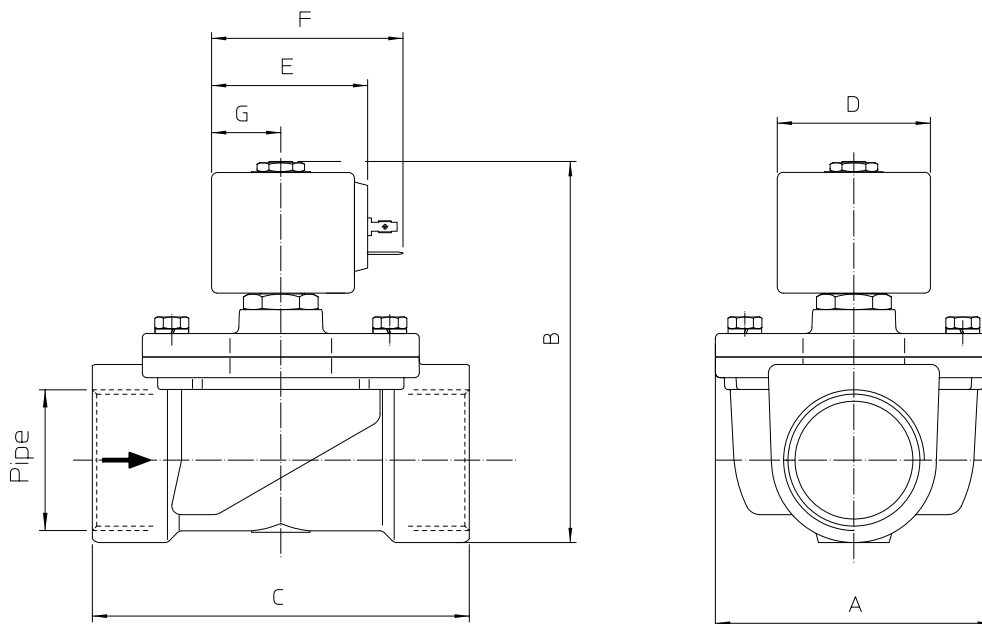
IEC 335
IP65 EN 60529 (DIN 40050)
with coil fitted by connector.

SPARE PARTS:

- 1. Coil: See coils list
- 2. Complete armature tube: Code R450603
- 3. Gasket O-ring: Code R990000/B
- 4. Gasket O-ring:
 - G1 Code R990153/V
 - G1 1/4 - G1 1/2 Code R992061/V
- 5. Complete diaphragm with plunger:
 - G1 Code R452269/V
 - G1 1/4 - G1 1/2 Code R452395/V
- 6. Gasket O-ring: G1 Code R990002/V

MAINTENANCE KIT:

- G1 KTGHF5K0V20=4+5+6
- G1 1/4 - G1 1/2 KTGHF7K0V35=4+5



Type	Pipe ISO 228/1	A mm	B mm	C mm
21HF6K0V250	G1	65	110	104
21HF7K0V350	G1 1/4	94	130	128
21HF8K0V400	G1 1/2			

COIL TYPE	POWER ABSORPTION			DIMENSIONS		
	WH =	old VA ~	Inrush VA ~	D mm	E mm	F mm
B	8	14,5	25	30	42	54
U	12	23	35	36	48	60
G	14	27	43	52	55	67

2-WAY COMBINED OP.

ODE SOLENOID - 4743K0V120

CAR WASH | 2 way N.C. | Modular w/Pilot Control

PRESENTATION:

Direct acting S.V. for interception of fluids compatible with the construction materials.

A minimum operational pressure of 0.1bar is required.

The materials used and the tests carried out ensure maximum reliability and duration.

PIPES: Inlet Flange - G1/2 Outlet

USE: CAR WASH

COILS:

8W - Ø13

BDA-BDS-BSA 155°C (class F)

BDP 160°C (high temp.)

BDF 180°C (class H)

UDA 155°C (class F)



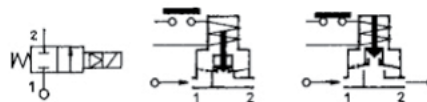
Moulding and bobbin are made by 100% virgin material

Max. allowable pressure (PS) 20 bar

Environment temperature:

With coil class F and high temperature - 10°C + 60°C

With coil class H - 10°C + 80°C



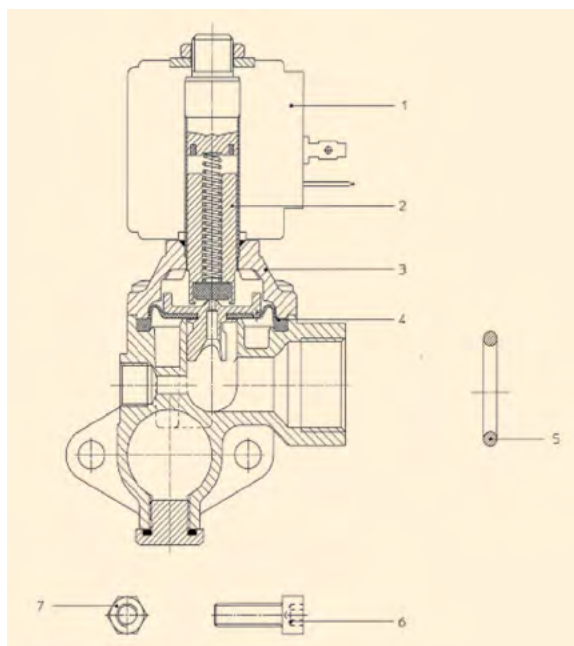
Gaskets	Temperature		Medium
V=FKM (fluoroelastomer)	-10°C	+140°C	Water

Pipe	Code	Max viscosity		Ø mm	Kv l/mn	Power (watt)	Pressure		
		cSt	°E				min barA	M.O.P.D.	
								Cb ar	DC bar
FLANGE	4743K0V120	12	~2	12	40	8 12	0,1	16 -	10 16

Note: Available on request and with minimum quantities.

"ODE" reserves the right to carry out technical and aesthetic modifications without prior notification.

SPECIAL ITEM - NOT STANDARD



MATERIALS:

Body Brass - UNI EN 12165 CW617N
 Armature tube Stainless steel AISI series 300
 Fixed core Stainless steel AISI series 400
 Plunger Stainless steel AISI series 400
 Phase displacement ring Copper - Cu 99,9%
 Spring Stainless steel AISI series 300
 Seal Standard: V=FKM

ORIFICE: Brass - UNI EN 12165 CW617N

ON REQUEST:

Connector Please request
 Connector conformity ISO 4400

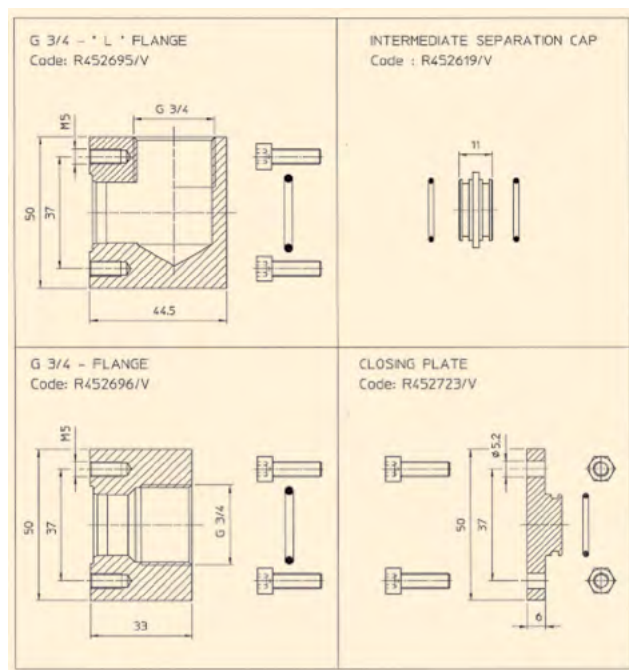
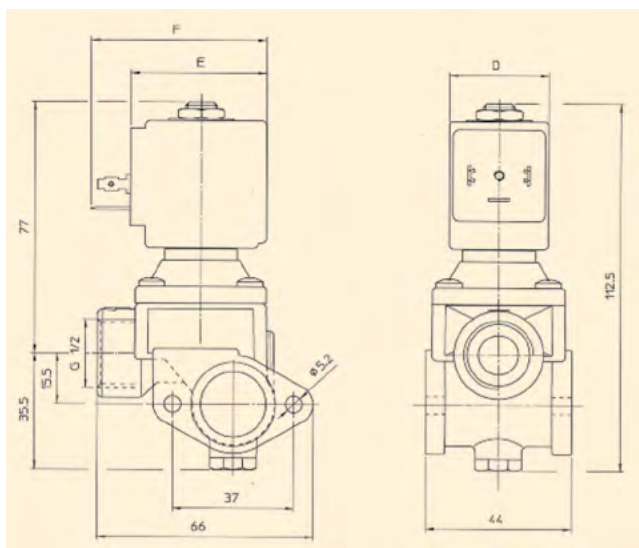
FEATURES:

Electrical conformity IEC 335
 Protection degree IP65 EN 60529 (DIN 40050)
 with coil fitted by connector.

SPARE PARTS:

1. Coil: See coils list
2. Complete plunger: Code R451284/V
3. Complete cover with armature tube: Code R450938
4. Complete diaphragm: Code R450916/V
5. Guarnizione: O-Ring: Code 990146/V
6. Screw M5x16: Code 990455
7. Nut M5x4: Code R990468

KIT: KTG0H7KV12 = 2+4



CAR WASH
MODULAR WITH
PILOT CONTROL

COIL	POWER ABSORPTION		TYPE	DIMENSIONS		
	W	Inrush VA~		Hold VA~	D mm	E mm
8W	25	14,5	B	30	42	54
12 W	35	25	U	36	48	60



PRESENTATION:

Bank S.V. for automatic drink dispensers.
A minimum operational pressure is not required.
The materials used and the tests carried out ensure maximum reliability and duration..

PIPES: Next page - (A-B-D-I-L-R)

USE: AUTOMATIC DRINK DISPENSERS

COILS:

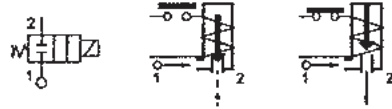
8W - Ø13		
BDA-BDS-BSA	155°C	(class F)
BDP	160°C	(high temp.)
BDF	180°C	(class H)

Moulding and bobbin are made by 100% virgin material

Environment temperature:
With coil class F and high temperature - 10°C + 60°C
With coil class H - 10°C + 80°C

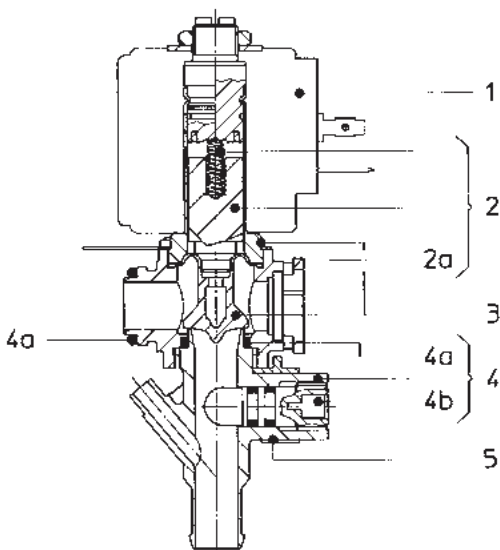


Gaskets	Temperature		Medium
S=VMQ (silicone)	+ 2°C	+100°C	Water



Pipe	Code	Max viscosity		Ø mm	Kv l/mn	Power (watt)	Pressure		
		cSt	°E				min bar	M.O.P.D. AC bar DC bar	
See connection types overleaf (A-B-D-I-L-R)	21K72KRS90-000	-	-	9	*	8	0	0,3	0,3
	22K72KRS90-000								
	23K72KRS90-000								
	24K72KRS90-000								
	25K72KRS90-000								
	26K72KRS90-000								

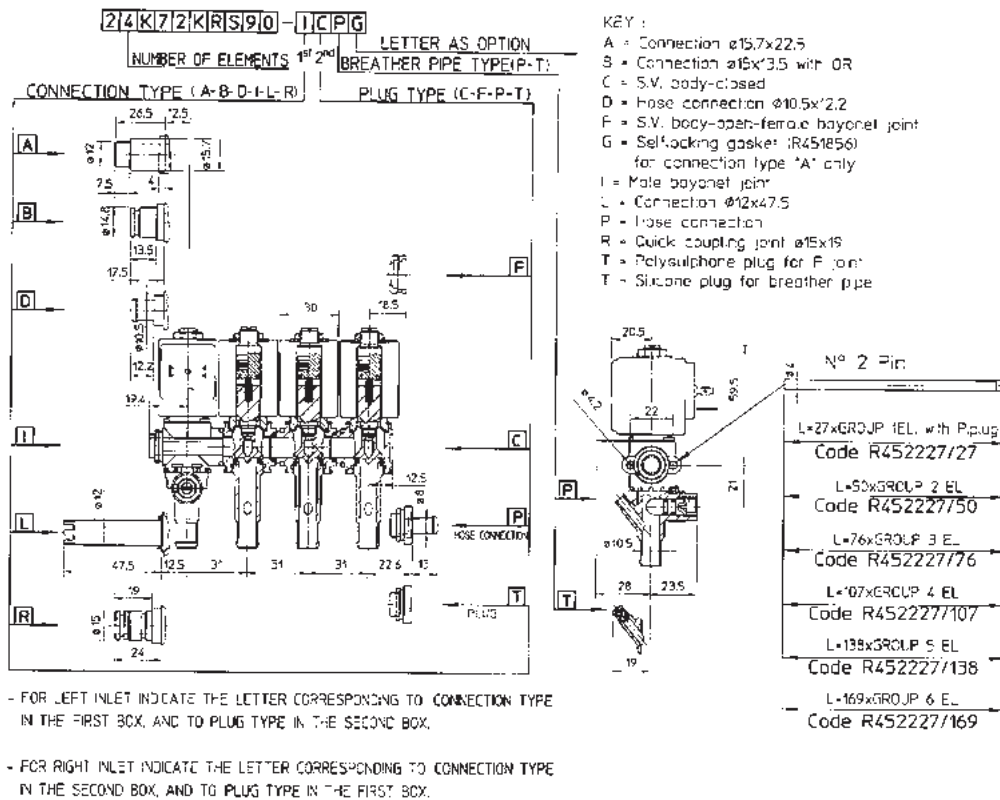
Note: *Flow rate with head of 80mm = 2,5L/min
"ODE" reserves the right to carry out technical and aesthetic modifications without prior notification.



NSF CERTIFIED



DRINK/COFFEE DISPENSERS



MATERIALS:

- | | |
|----------------------------|---------------------------------|
| Body | PSU (Polysulphone) |
| Lower body | PSU (Polysulphone) |
| Lower body clamping device | PA (Polyamide) |
| Armature tube | Brass - UNI EN 12165 CW617N |
| Fixed core | Stainless steel AISI series 400 |
| Plunger | Stainless steel AISI series 400 |
| Phase displacement ring | Copper - Cu 99,9% |
| Spring | Stainless steel AISI series 300 |
| Bellow membrane | Standard: S=VMQ |
| | On request: W=MFQ |

SPARE PARTS:

1. Coil: See coils list
2. Complete plunger: Code R452491/S
- 2a. Bellow membrane: Code R452489/S
3. Complete armature tube: Code R452197
4. Lower body assembly: Code R452493
- 4a. Gasket O-Ring: Code R990052/S
- 4b. Flow setting screw with O-Ring: Code R452226
5. Lower body clamping device: Code R452259

KIT: KR130KRS90-L3 = 2+3

COIL	POWER ABSORPTION		TYPE
W	Inrush VA~	Hold VA~	
8 W	25	14,5	B

DRINK/COFFEE DISPENSERS



PRESENTATION:

Bank S.V. for automatic drink dispensers.
A minimum operational pressure is not required.
The materials used and the tests carried out ensure maximum reliability and duration..

PIPES: Next page - (A-B-D-I-L-R)

USE: AUTOMATIC DRINK DISPENSERS

COILS:

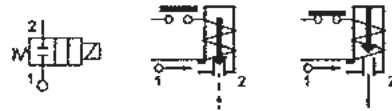
12W ED 50% - Ø10
ICA 155°C (class F)



Moulding and bobbin are made by 100% virgin material

Environment temperature: - 10°C + 60°C

Gaskets	Temperature		Medium
S=VMQ (silicone)	+ 2°C	+100°C	Water

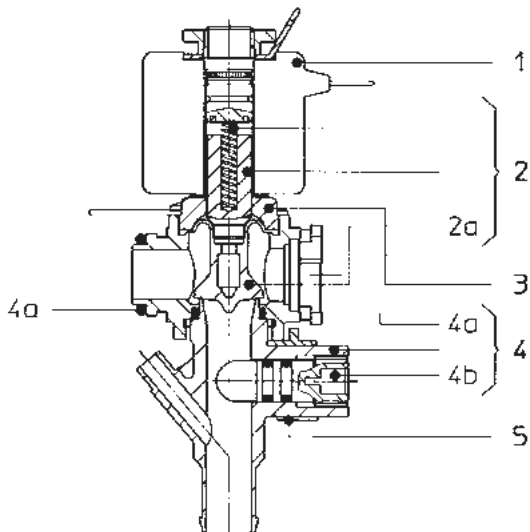


Pipe	Code	Max viscosity		Ø mm	Kv l/mn	Power (watt)	Pressure		
		cSt	°E				min barA	M.O.P.D. C barD C bar	
See connection types overleaf (A-B-D-I-L-R)	21K72RRS90-000	-	-	9	*	12 ED 50%	0	0,3	0,3
	22K72RRS90-000								
	23K72RRS90-000								
	24K72RRS90-000								
	25K72RRS90-000								
26K72RRS90-000									

Note: * FLOW RATE WITH HEAD OF 80 mm = 2,5 l/min

Available on request and with minimum quantities.

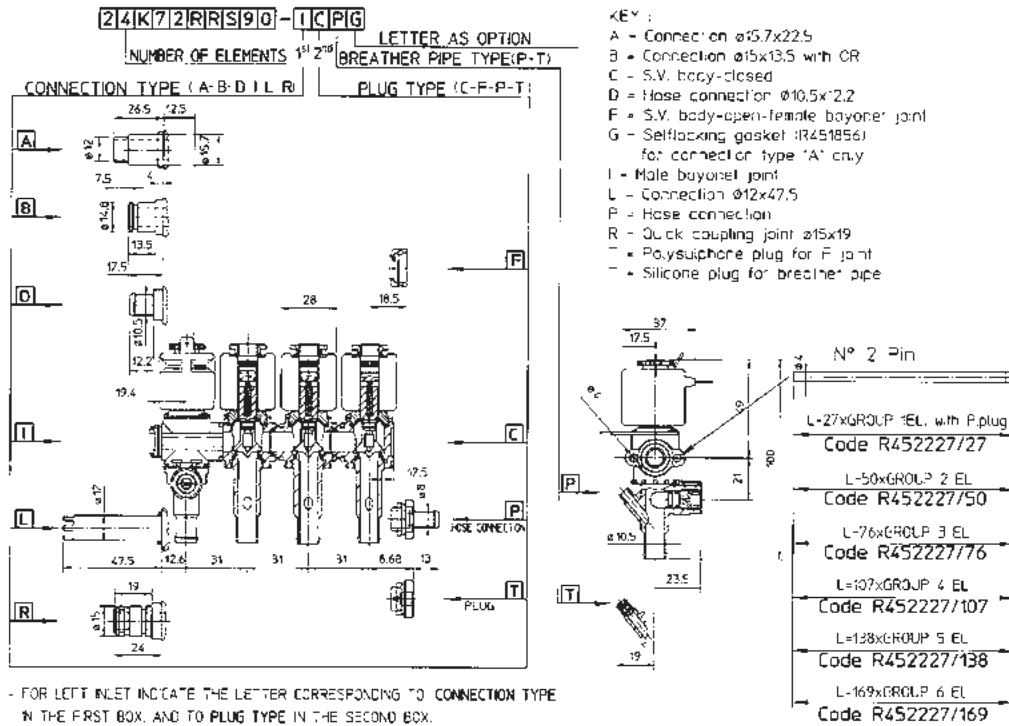
“ODE” reserves the right to carry out technical and aesthetic modifications without prior notification.



DRINK/COFFEE DISPENSER

NSF CERTIFIED





MATERIALS:

Body	PSU (Polysulphone)
Lower body	PSU (Polysulphone)
Lower body clamping device	PA (Polyamide)
Armature tube	Brass - UNI EN 12165 CW617N
Fixed core	Stainless steel AISI series 400
Plunger	Stainless steel AISI series 400
Phase displacement ring	Copper - Cu 99,9%
Spring	Stainless steel AISI series 300
Bellow membrane	Standard: S=VMQ
	On request: W=MFQ

SPARE PARTS:

1. Coil: See coils list
2. Complete plunger: Code R452236/S
- 2a. Bellow membrane: Code R452224/S
3. Complete armature tube: Code R452241
4. Lower body assembly: Code R452294
- 4a. Gasket O-Ring: Code R990052/S
- 4b. Flow setting screw with O-Ring: Code R452226
- 4c. Lower body clamping device: Code R452259

KIT: KR130RRS90-L2 = 2+3

COIL	POWER ABSORPTION		TYPE
	W	VA~	
12 W	30	21	I

DRINK/COFFEE DISPENSER



- 2 way valves small and large
- 3 way valves small and large
- Vibrator pumps
- Total separation valves for 'instant' machines

- Coffee head valves both flanged and threaded
- Hot and cold water valves
- Steam valves
- Spares, coils and plugs

Coffee/Head Valves

- Industry standard sub plate mount
- Or 1/8 or 1/4 ports
- Viton or ruby seats
- Various orifice sizes
- High temperature C



31A1A-R (pg17&18)



31A3A/31A2A (pg21&22)

Compact size Steam, Hot and Cold water valves

- 2 and 3 way functions
- 1/8 ports
- Viton seats
- Various orifice sizes
- High temperature coil



21JN1R0 (pg7&8)



31JN1XP (pg19-20)

Standard size Steam, Hot and Cold water valves

- 2 and 3 way function
- 1/8 or 1/4 ports
- Viton or ruby seats
- High temperature coil



21A3K (pg3&4)



31A3A (pg21&22)

Pump – vibrator type

- Interchangeable with other brands
- High performance
- Rubber mounts available



(for more info contact MVP)

Total separation valves - for 'Instant' coffee machines

- Interchangeable with other brands
- Can be single or multiple valves
- Various coil voltages
- Integral flow controls



21K72KR (pg25&26)



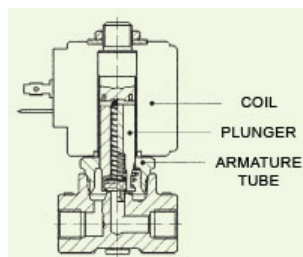
21K72RR (pg27&28)

Valve Spares

- Plunger compact 2 way
- Plunger compact 3 way
- Plunger standard 2 way Viton
- Plunger standard 2 way Ruby
- Plunger standard 3 way Viton

- Plunger standard 3 way Ruby
- Armature tube compact 2 way
- O-ring for 2 way armature tube
- Armature tube standard 3 way with hose tail exhaust

- Coil Standard valve 8 watt
- Coil compact valve 5 watt



- Plug compact coil rectangular
- Plug standard coil square



5Watt (pg30)



8Watt (pg30)



Square DIN (pg30)



Rectangular DIN (pg30)

DRINK/COFFEE DISPENSER

