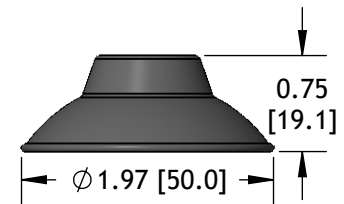


Flat-Concave Vacuum Cups

Cup Material		Cup Fitting		Filter			
XP-FC50		A		-14F		-FD	
A	Ameriflex	(Blank)	None	(Blank)	None		
N	Nitrile	See cup fittings for available threads.		-FD	PE Filter Disc		
				-FS	SS Filter Screen		
				See cup fittings for availability.			

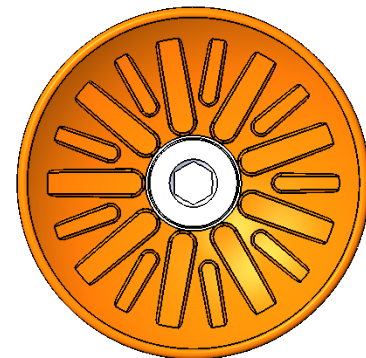
²All figures for shear load are 18" Hg. using a 0.5 coefficient of friction. Adjust coefficient of friction to suit your conditions, then apply a generous factor of safety (3:1 or greater) to shear loads.



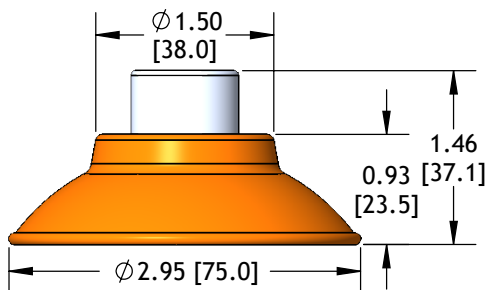
Cup Diameter: in [mm]	50 mm
Thru Hole: in [mm]	0.36 [9.1]
Stroke: in [mm]	0.25 [6.4]
Cup Weight: oz [g]	0.30 [7.9]
Internal Volume: cu in [cc]	0.70 [11.5]
Force @ 6 inHG: lb [n]	7.80 [34.7]
Force @ 18 inHG: lb [n]	19.00 [84.5]
Minimum Radius: in [mm]	2.09 [53.1]
Shear Load ² : lb [n]	10.00 [44.5]

Cup Material		Fitting			
XP-FC75		S		- 38F	
N	Nitrile	38F	3/8-18 NPSF Female		
S	Silicone	G38M	G 3/8-19 Male		

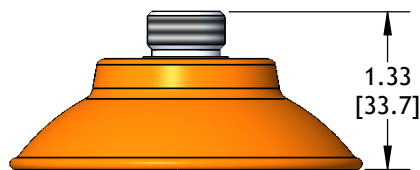
²All figures for shear load are 18" Hg. using a 0.5 coefficient of friction. Adjust coefficient of friction to suit your conditions, then apply a generous factor of safety (3:1 or greater) to shear loads.



Bottom View
Concave cleats on bottom.
8 mm Hex Socket



XP-FC75-38F



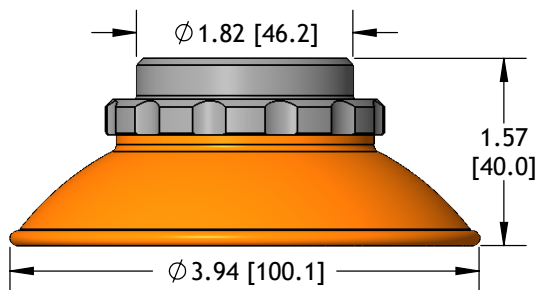
XP-FC75-G38M

Cup Diameter: in [mm]	75 mm
Stroke: in [mm]	0.36 [9.1]
Cup Weight: oz [g]	1.70 [48.2]
Internal Volume: cu in [cc]	1.80 [29.5]
Force @ 6 inHG: lb [n]	17.00 [75.6]
Force @ 18 inHG: lb [n]	35.00 [154.0]
Minimum Radius: in [mm]	2.80 [71.1]
Shear Load ² : lb [n]	45.00 [200.0]

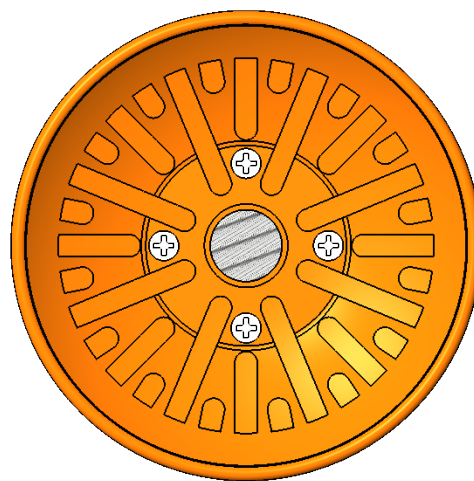
Flat-Concave Vacuum Cups

Cup Material		Cup Fitting	
XP-FC100	N	-18F	
N	Nitrile	(Blank)	None
S	Silicone	See cup fittings for available threads.	

²All figures for shear load are 18”Hg. using a 0.5 coefficient of friction. Adjust coefficient of friction to suit your conditions, then apply a generous factor of safety (3:1 or greater) to shear loads.



Cup Diameter: in [mm]	100 mm
Stroke: in [mm]	0.48 [12.2]
Cup Weight: oz [g]	1.90 [54.0]
Internal Volume: cu in [cc]	4.90 [80.3]
Force @ 6 inHG: lb [n]	31.00 [138.0]
Force @ 18 inHG: lb [n]	64.00 [285.0]
Minimum Radius: in [mm]	4.30 [109.0]
Shear Load ² : lb [n]	53.00 [236.0]



Bottom View
Concave cleats on bottom.