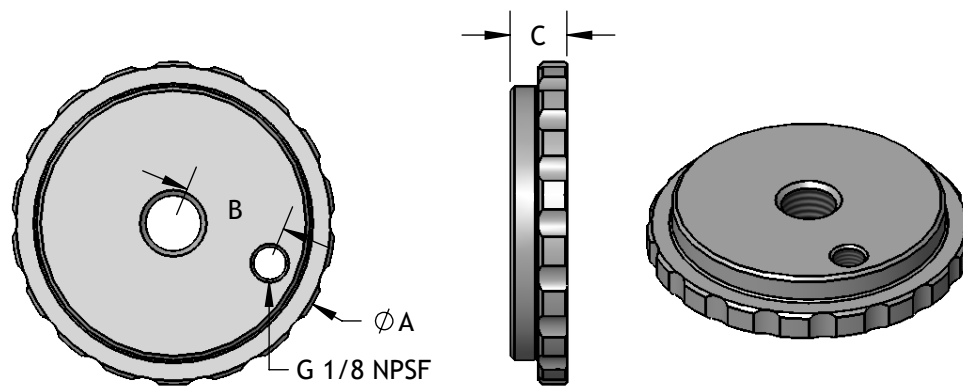


Ø 75 - 150 mm Cups



Fitting	Assembly Suffix	Weight oz [g]	A in [mm]	B in [mm]	C in [mm]	Thread	Filter PE	Filter SS
75-18F	-18F	2.80 [79.4]	2.36 [60.0]	N/A	0.68 [17.3]	G 1/8 NPSF	N/A	FS25
75-14F	-14F	2.70 [76.5]	2.36 [60.0]	N/A	0.68 [17.3]	1/4 NPSF	N/A	FS25
75-G14F	-G14F	2.70 [76.5]	2.36 [60.0]	N/A	0.68 [17.3]	G 1/4	N/A	FS25
75-38F	-38F	2.70 [76.5]	2.36 [60.0]	N/A	0.68 [17.3]	3/8 NPSF	N/A	FS25
75-G38F	-G38F	2.70 [76.5]	2.36 [60.0]	N/A	0.68 [17.3]	G 3/8	N/A	FS25
75-12F	-12F	2.60 [73.7]	2.36 [60.0]	N/A	0.68 [17.3]	G 1/2 NPSF	N/A	FS25
110-38F	-38F	5.10 [145.0]	3.35 [85.1]	1.10 [27.9]	0.59 [15.0]	3/8 NPSF	N/A	FS30
110-12F	-12F	5.10 [145.0]	3.35 [85.1]	1.10 [27.9]	0.59 [15.0]	G 1/2 NPSF	N/A	FS30
150-38F	-38F	8.50 [241.0]	4.72 [120.0]	1.38 [25.0]	0.56 [14.2]	3/8 NPSF	N/A	FS30
150-12F	-12F	8.50 [241.0]	4.72 [120.0]	1.38 [25.0]	0.56 [14.2]	G 1/2 NPSF	N/A	FS30

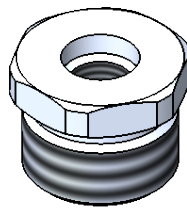
All 75 - 150 fittings include M4X10-965A Stainless Steel Screws.

Sizes 110 and 150 fittings also include an FS21 Filter Screen and P18 Plug for Auxiliary Port.

Metric Bushings

For use with 75-12F, 110-12F, and 150-12F fittings.

Bushing	Female Thread	Weight oz [g]
G12M-M8X1.25F	M8X1.25	0.49 [13.8]
G12M-M10X1.25F	M10X1.25	0.45 [12.7]
G12M-M10X1.5F	M10X1.5	0.45 [12.7]
G12M-M12X1.75F	M12X1.75	0.40 [11.3]
G12M-M16X1.5F	M16X1.5	0.24 [6.8]



Cup Fitting Adapters

Adapter	Thread 1	Thread 2	Weight oz [g]
38MX18M	3/8 NPSF	G 1/8 NPS	0.26 [7.3]
38MX38M	3/8 NPSF	3/8 NPSF	0.31 [8.9]
38MX12M	3/8 NPSF	G 1/2 NPS	0.59 [16.8]
12MX12M	G 1/2 NPS	G 1/2 NPS	0.77 [21.7]

